

# THE CANDY BOX

LIVING AREA	93.8
TOTAL AREA	181.05
NUMBER OF FLOORS	1
ROOF SLOPE	1.4
BUILDING AREA	249.35
LENGTH	19.46
WIDTH	15.51
HEIGHT	4.96

PRICE

€ ~~2.928~~

€ 2.420

## NAMO PROJEKTAS THE CANDY BOX

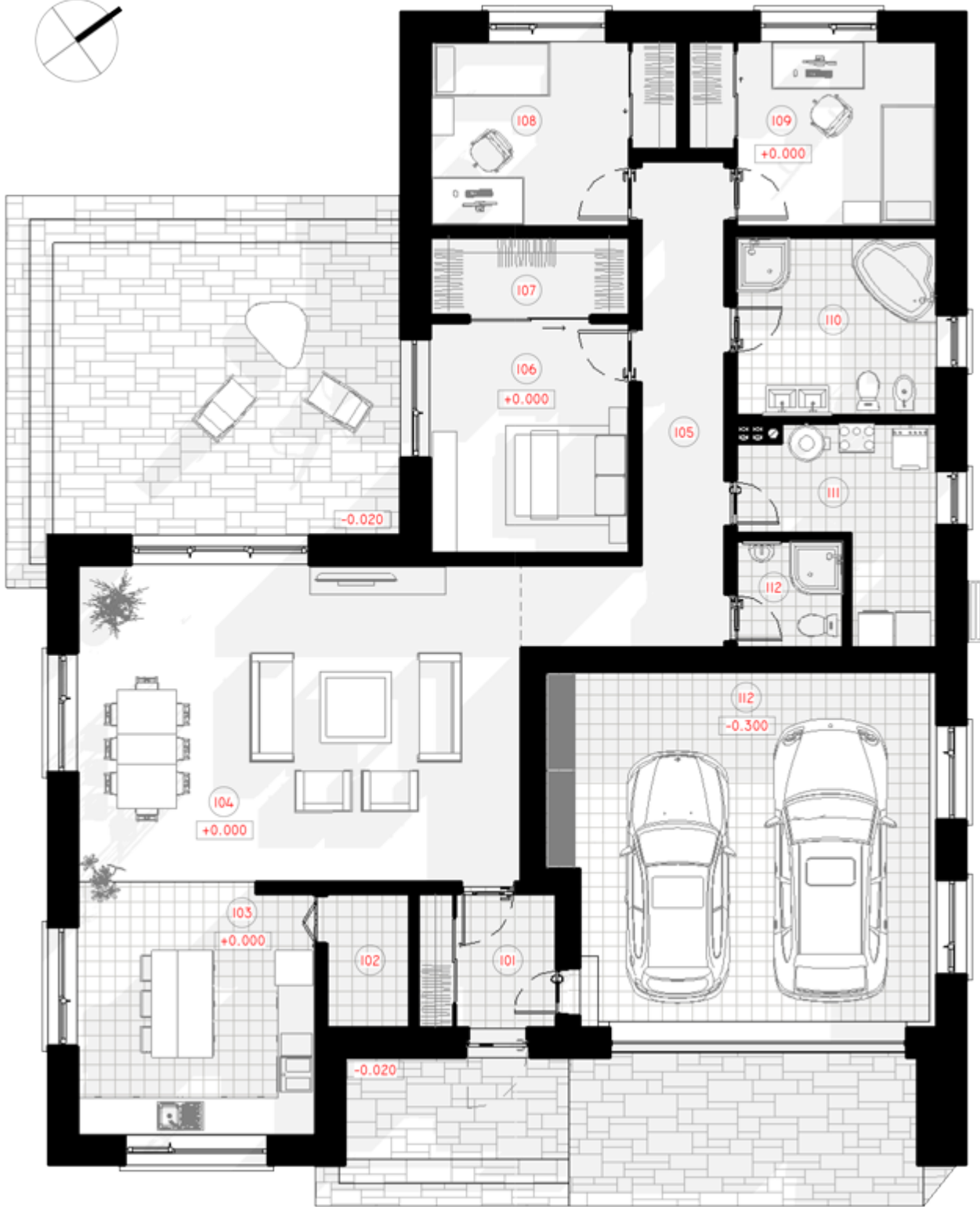
Are you looking for the best housing solution for a small family? You look forward to the opportunity of settling away from your neighbors' eyes? Are you seeking to live your private family life, without any fear, that a thin wall of the apartment will feed ears and tongues of your nosy neighbors'? The majority of young families have a dream - to build their own homes. But there is always a bit of long time construction process duration and high costs.

Do not be afraid - a typical "THE CANDY BOX" house project is just for you. A single-storey house project with an overlapped roof is your best choice. This family housing meets today's market demand, the highest construction standards. It will be a modern house for your family. You will plant a tree, no one will complain about the noise of your children or the barking dog. The modern technical drawing will certainly meet your expectations. The total area of the house is 181, 05 sq. meters (living area 93.8 square meters). You will park a family car in the 38 square meters garage.

This is an L-shaped house project that fits quite comfortably into the existing plot. Typical technical drawing - will help to visualize the whole house under construction, choose the style and design of housing. A modern home project is an attractive solution, it can afford even a young family. It is a smart contemporary housing solution.





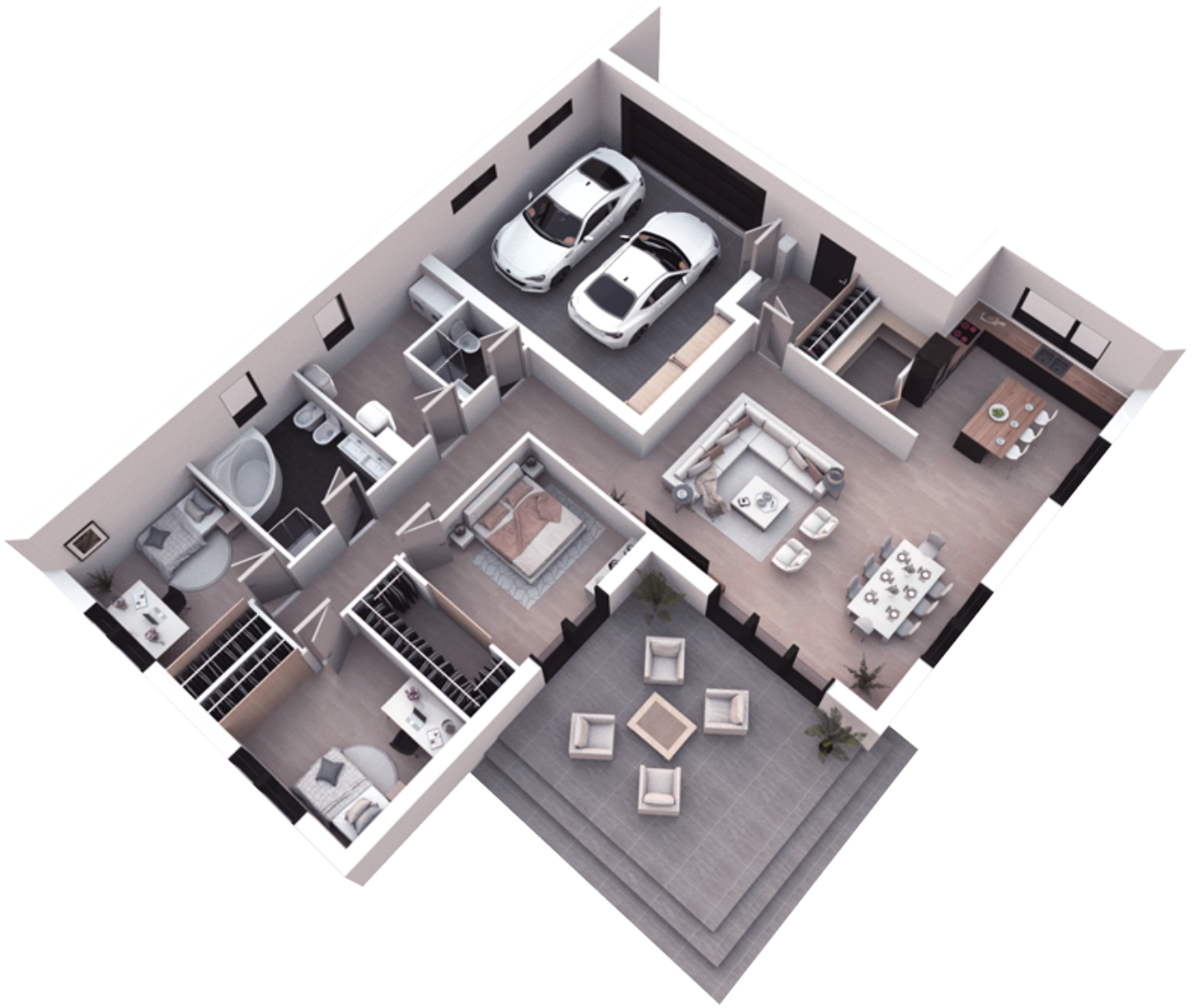


# 1ST FLOOR PLAN

---

101 CORRIDOR	5.29 m <sup>2</sup>
102 PANTRY	3.20 m <sup>2</sup>
103 KITCHEN	16.88 m <sup>2</sup>
104 LIVING ROOM	40.02 m <sup>2</sup>
105 HALL-CORRIDOR	14.35m <sup>2</sup>
106 PARENTS BEDROOM	13.04 m <sup>2</sup>
107 CLOSET	4.38m <sup>2</sup>
108 CHILDRENS ROOM	11.93 m <sup>2</sup>
109 CHILDRENS ROOM	11.93m <sup>2</sup>
110 BATHROOM	10.08 m <sup>2</sup>
111 BOILER ROOM	8.72 m <sup>2</sup>
112 BATHROOM	3.24 m <sup>2</sup>
112 GARAGE	38.00 m <sup>2</sup>
<b>TOTAL:</b>	<b>181.05m<sup>2</sup></b>

---



# 3D PLAN