

# THE CONCRETE BOX

LIVING AREA	131.66
TOTAL AREA	183.48
NUMBER OF FLOORS	2
ROOF SLOPE	1.4
BUILDING AREA	179,4116
LENGTH	12.52
WIDTH	14.33
HEIGHT	7.63

PRICE ~~€ 2.928~~ € 2.420

## HOUSE PROJECT THE CLEAR BOX

Do you enjoy going outside, sitting in an open-air at the balcony on a warm summer day with a cup of coffee, listening to the birds chirping, or spending an afternoon with a book? If it is so, you must choose a two-storey square-shaped house project with a balcony. The modern house project perfectly fits into a narrow plot. It is a great choice for those who like watching life from the above.

On the ground floor architects designed a spacious 47.22 sq. meters kitchen with an open living room and an 11.80 sq. meters study room. A great interior accent can be a stair set. Upstairs we have a spacious master bedroom, two children's rooms, 2 special spaces for wardrobes. If you create a nice interior design, choose the right furniture, you set up a perfect dream home, with plenty of space for the family and reception of guests. The modern architecture allows you to create a cozy, pleasant, and tidy home and its surroundings. Large windows – a natural source of light. Rational layout lets you create a dream home for a harmonious life. The house where each family member will be able to interact with others in the open spaces, but will also have a private corner for sleep and private moments. Moreover, it is your chance to move away from the living at the traditional block of a house, reminding us of life in an anthill. Personal family residence creates you an oasis of coziness and luxury. And the most important issue, we have to admit is – your own parking space for a family

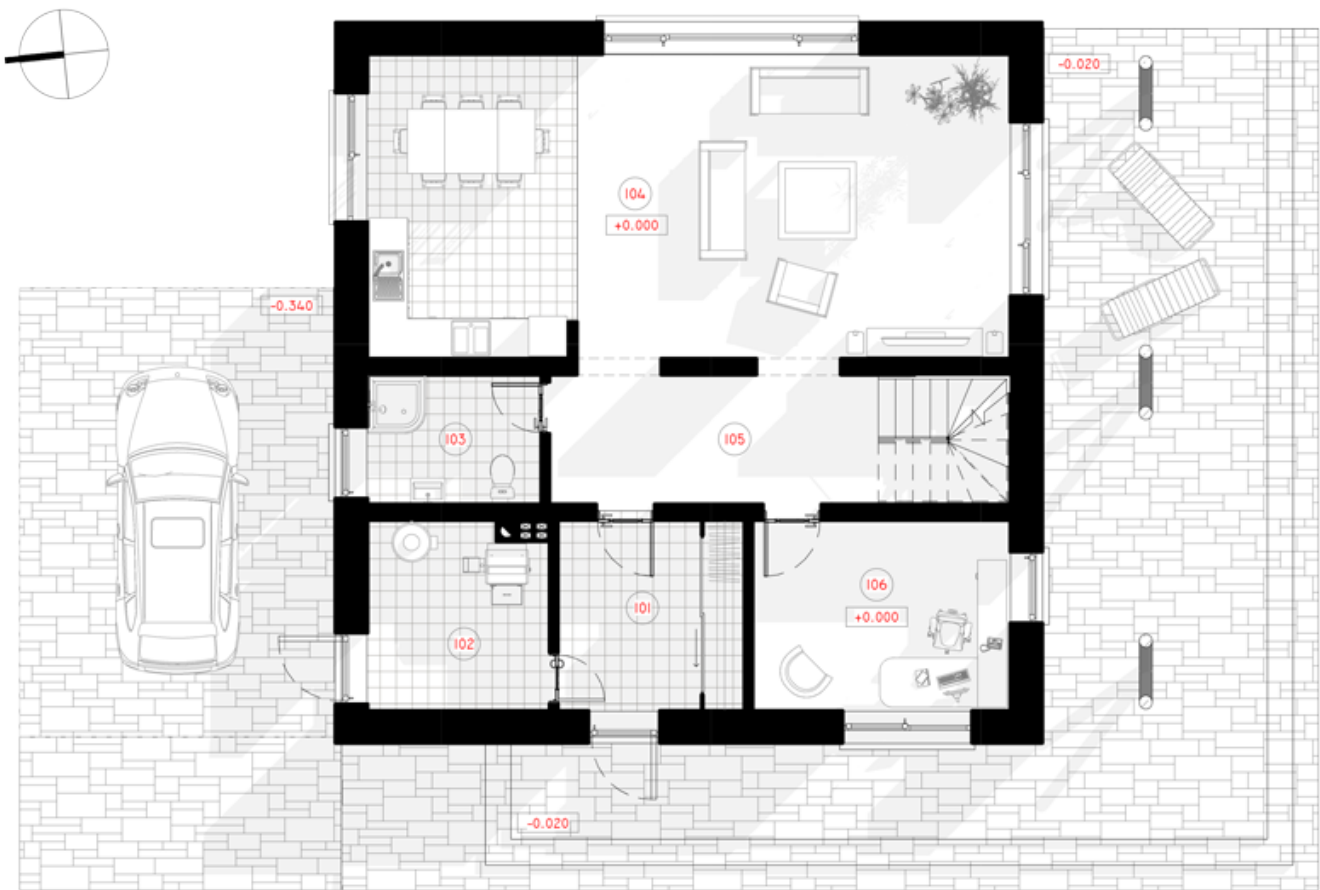
car. No fights for parking space in the narrow yard with your neighbors anymore.

Two-storey house projects are for those who dream about spacious family housing. Typical technical drawing allows you to start the construction process immediately, save sketching costs.



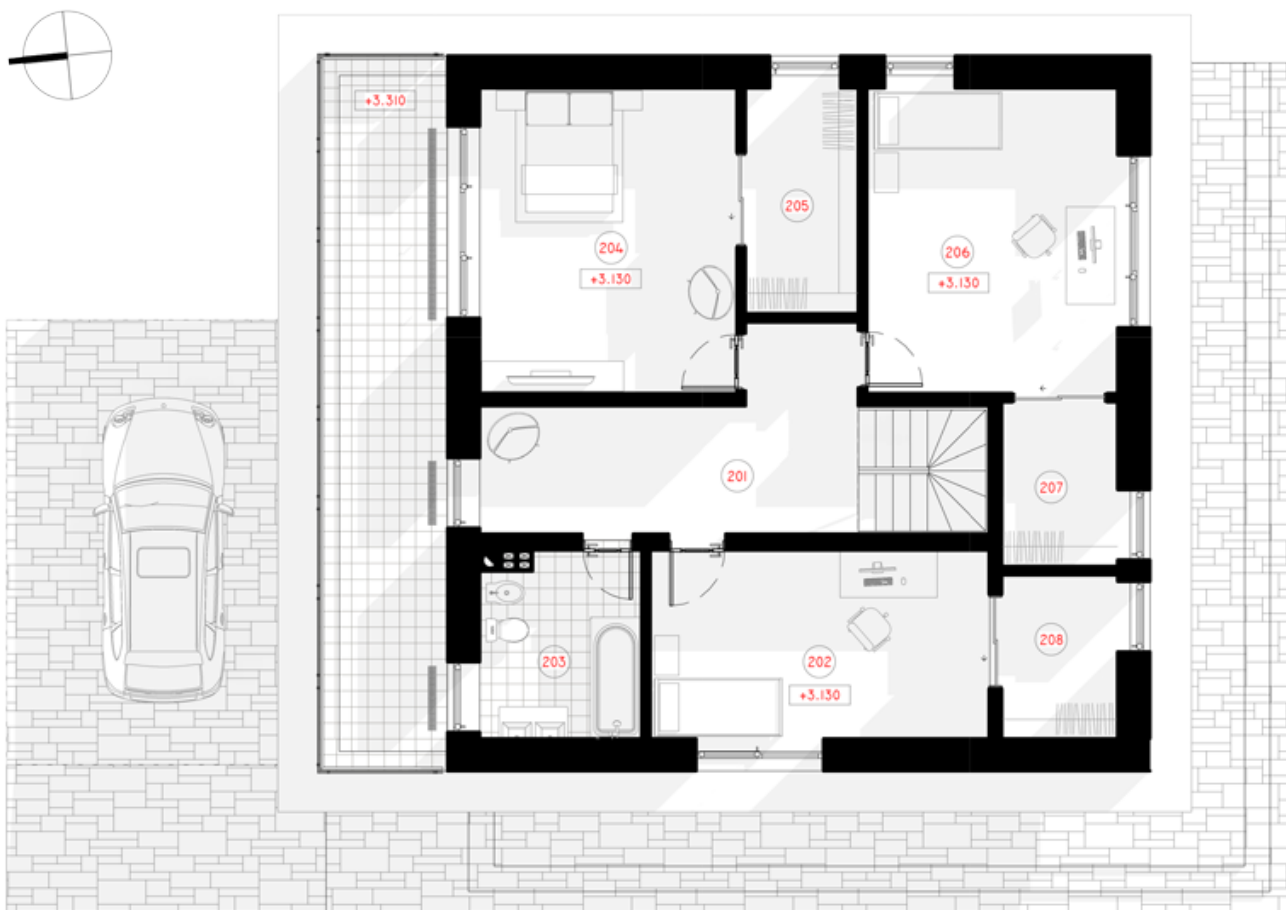






# 1ST FLOOR PLAN

101 CORRIDOR	8.53 m <sup>2</sup>
102 BOILER ROOM	8.07 m <sup>2</sup>
103 BATHROOM	5.40 m <sup>2</sup>
104 KITCHEN-LIVING ROOM	47.22 m <sup>2</sup>
105 HALL-STAIRCASE	11.77 m <sup>2</sup>
106 WORKROOM	11.80 m <sup>2</sup>
<b>TOTAL:</b>	<b>92.79m<sup>2</sup></b>



# 2ND FLOOR PLAN

201 HALL-STAIRCASE	14.18 m <sup>2</sup>
202 CHILDRENS ROOM	15.69 m <sup>2</sup>
203 BATHROOM	7.19m <sup>2</sup>
204 PARENTS BEDROOM	19.30 m <sup>2</sup>
205 CLOSET	6.21 m <sup>2</sup>
206 CHILDRENS ROOM	18.82 m <sup>2</sup>
207 CLOSET	4.65 m <sup>2</sup>

208 CLOSET

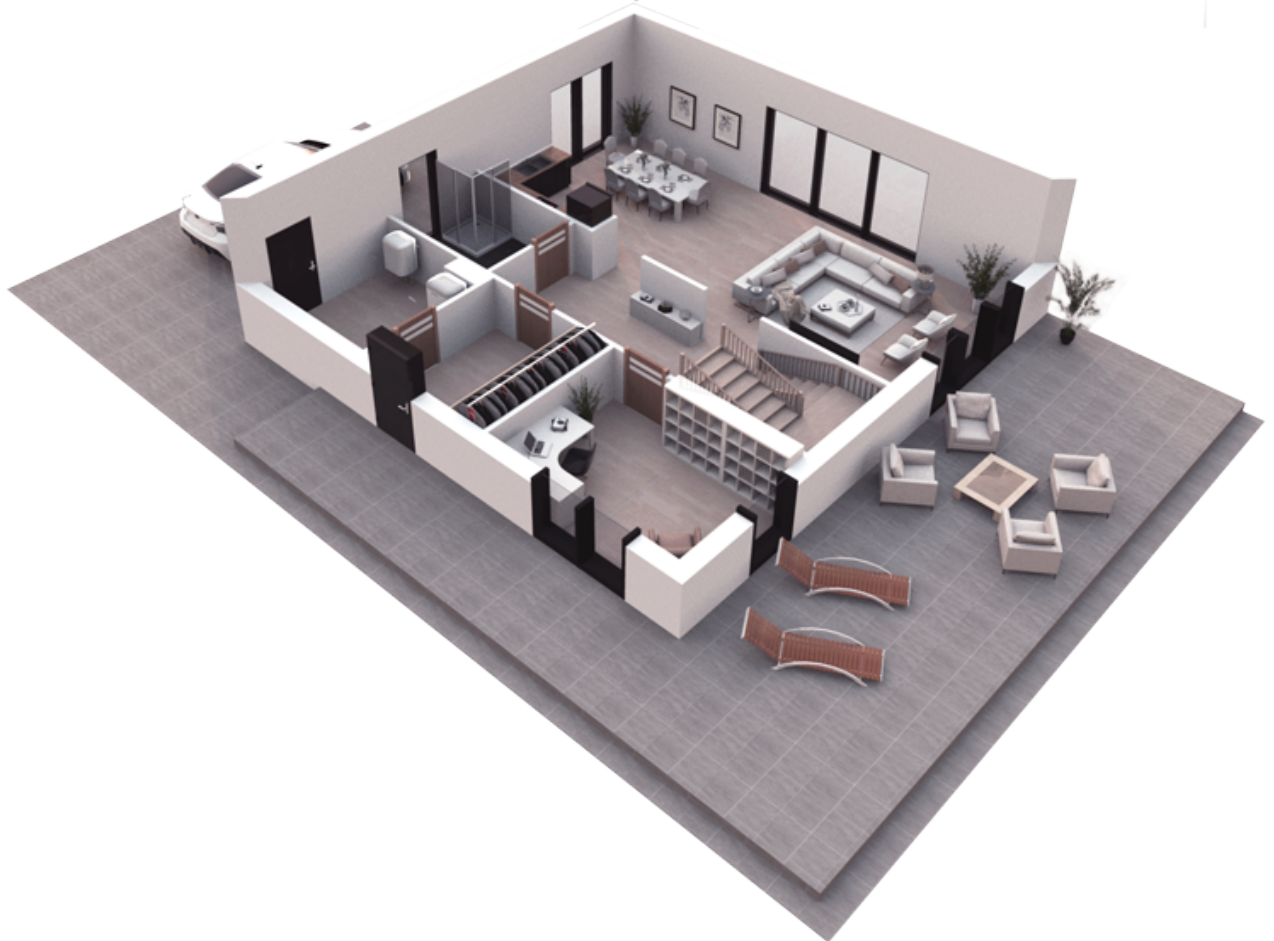
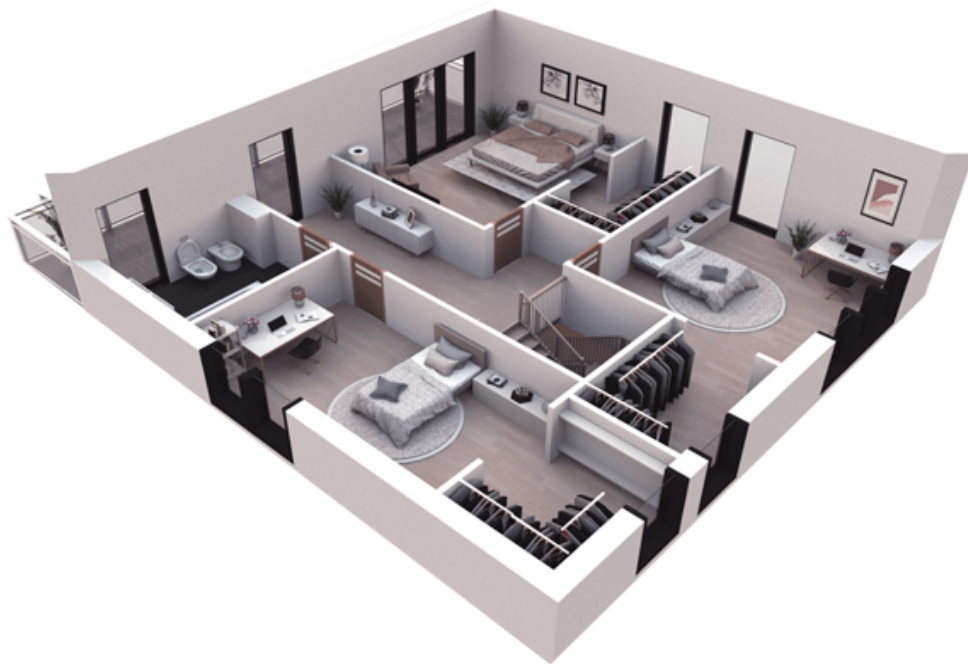
4.63 m<sup>2</sup>

---

**TOTAL:**

90,69m<sup>2</sup>

---



# 3D PLAN