

# THE CUPCAKE CASE

LIVING AREA	90.77
TOTAL AREA	127.35
NUMBER OF FLOORS	1
ROOF SLOPE	38 / 1.4
BUILDING AREA	222.69
LENGTH	20.28
WIDTH	16.11
HEIGHT	6.84

PRICE

~~€ 2.928~~

€ 2.420

## HOUSE PROJECT THE CUPCAKE CASE

Your first choice and appreciation have always been classical designs? Then a single-storey house project with a gable roof is just for you. When considering a house project, people often have to answer the question - what type of roof to choose? The fact is that modern technology provides an opportunity for a wide choice.

Contemporary home designs allow you to choose any type of roof. Considering reliable roofing, the most important thing is to take into account the local climatic conditions. A modern house project with a gable roof will be a great choice for those who appreciate functionality, reliability, and sustainability. The gable roof with a large slope does not hold raindrops, leaves, and snow. Undoubtedly a part of the comfort is natural light, terrace, and a nice view from the window. This single-storey house project is attractive with narrow but fairly long windows. 4.50 sq. meter tambour expands the space, helps to preserve heat in our penetrating climatic zone, and lets us easily reach the requirements of A + energy efficiency class.

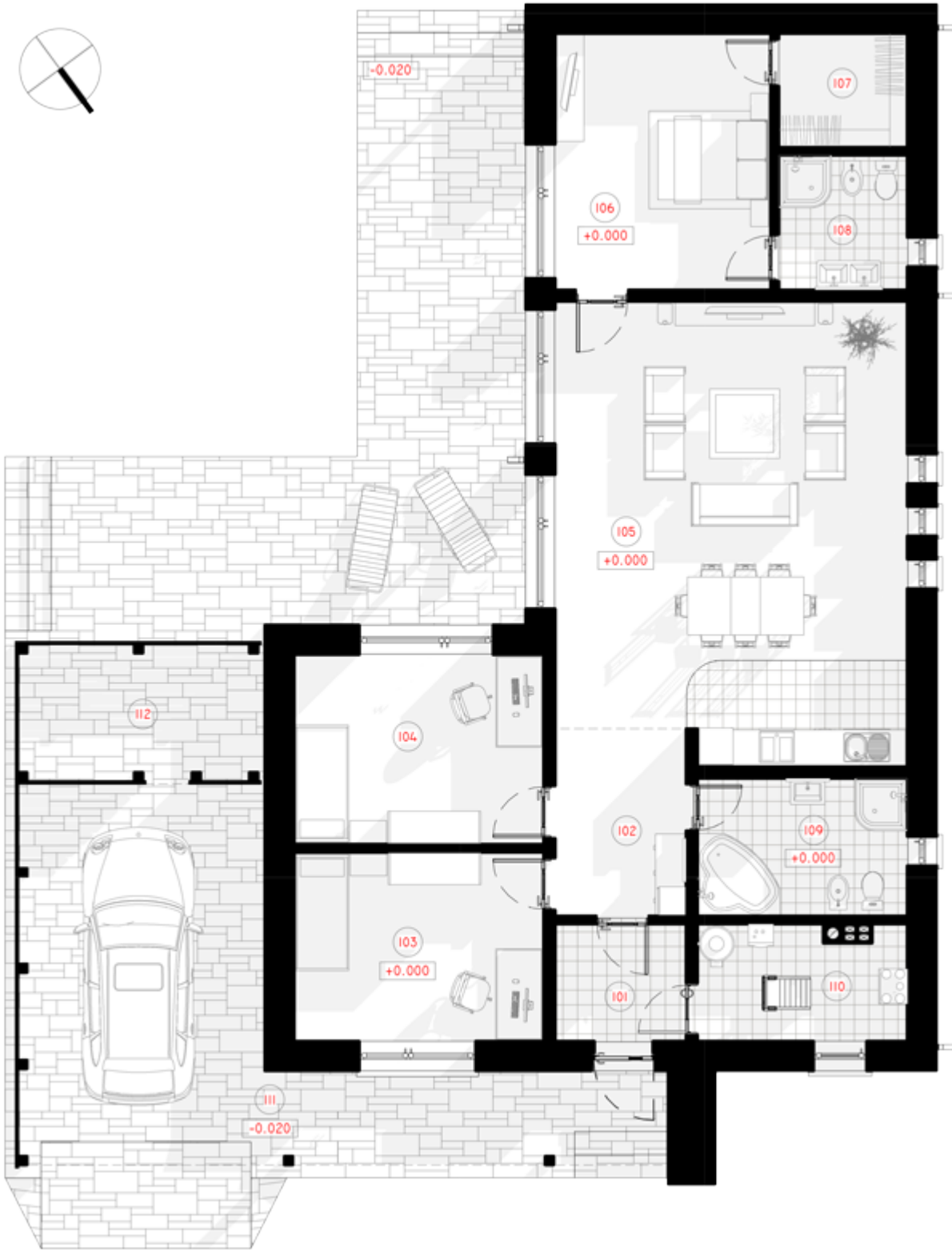
Typical technical drawing will let you visualize your future house project, faster initiate the construction process. The unique L-shaped project will rationally fit into any kind of plot. The layout includes 127.35 square meters (90.77 square meters of living space). Well-thought-out architectural

solutions create a cozy, spacious living room combined with an open kitchen ( 46.67 square meters). Modern house project provides a 38, 84 sq. meters shed for the car and 9.87 sq. meters utility room.







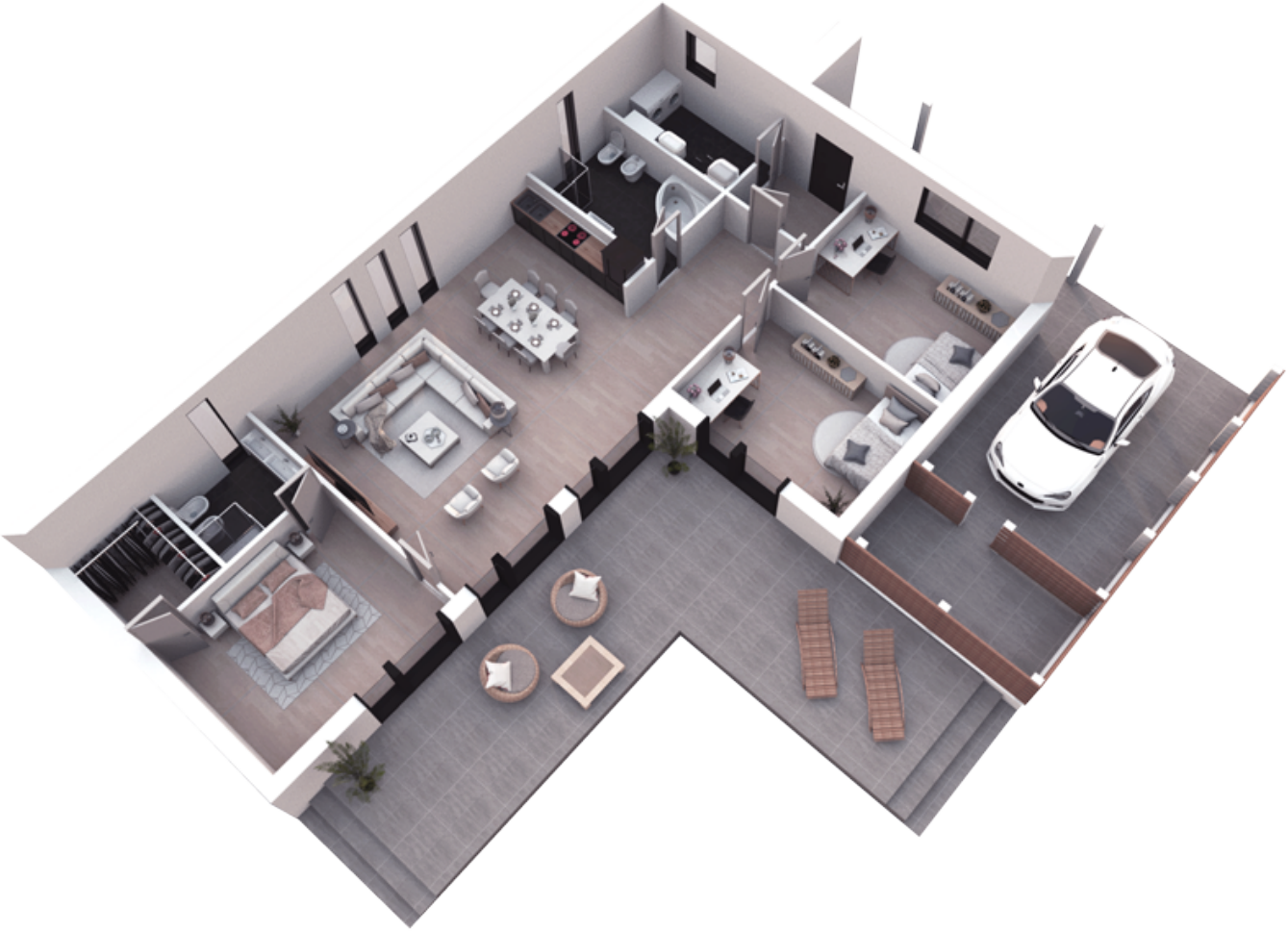


# 1ST FLOOR PLAN

---

101 CORRIDOR	4.50 m <sup>2</sup>
102 HALL-CORRIDOR	7.21 m <sup>2</sup>
103 CHILDRENS ROOM	13.91 m <sup>2</sup>
104 CHILDRENS ROOM	13.91 m <sup>2</sup>
105 KITCHEN-LIVING ROOM	46.67 m <sup>2</sup>
106 PARENTS BEDROOM	16.28 m <sup>2</sup>
107 CLOSET	4.29m <sup>2</sup>
108 BATHROOM	5.08 m <sup>2</sup>
109 BATHROOM	8.53m <sup>2</sup>
110 BOILER ROOM	6.96 m <sup>2</sup>
111 CARPORT	38.84 m <sup>2</sup>
112 WOODSHED	9.87 m <sup>2</sup>
<b>TOTAL:</b>	<b>176.06 m<sup>2</sup></b>

---



# 3D PLAN