

# THE CUPCAKE PATTY

LIVING AREA	106.5
TOTAL AREA	260.81
NUMBER OF FLOORS	2
ROOF SLOPE	40
BUILDING AREA	306.00
LENGTH	8.13
WIDTH	38.64
HEIGHT	7.08

PRICE ~~€ 2.928~~ € 2.420

## HOUSE PROJECT THE CUPCAKE PATTY

Have you ever wondered what is the difference between an impressive and functional design? - The answer is none. Experienced architects would say: both - impression and functionality can be accommodated under the same roof. That's why choosing the right house project is a very important issue.

"THE CUPCAKE PATTY" - rectangular shape elongated construction house project is like an ancient mansion - a place where artists, noble guests used to enjoy luxury receptions in the past. Culture, music, noble chats - reminds us of classical taste. This is a one-storey typical house project suitable for a narrow, elongated plot with an entrance from the Southside. This modern house is suitable for the plot with a slope. The huge living space (106.5 square meters) makes you think about the essential values. It will be your real home filled with love, the best place to keep your warmest memories of childhood, adolescence, youth. It is a perfect place for life. This modern mansion-type house project is for those who realize that life is like a struggle, it is necessary to take advantage of every joyful moment because no one will bring us the second life on a plate.

We create convenience and comfort for ourselves. After all, the house is our fortress. And the fortress must be cozy, comfortable, safe, and warm. The shed and the vertical window over the entire rear

wall of the house act as an accent of modern, contemporary design. Elongated, rectangular windows are a great source of light and heat. The classic sloping roof is decorated with skylights. The modern home project is a comfort, peace, and luxury. This house is the best choice for those who look for silence, harmony with nature at home, and around it.



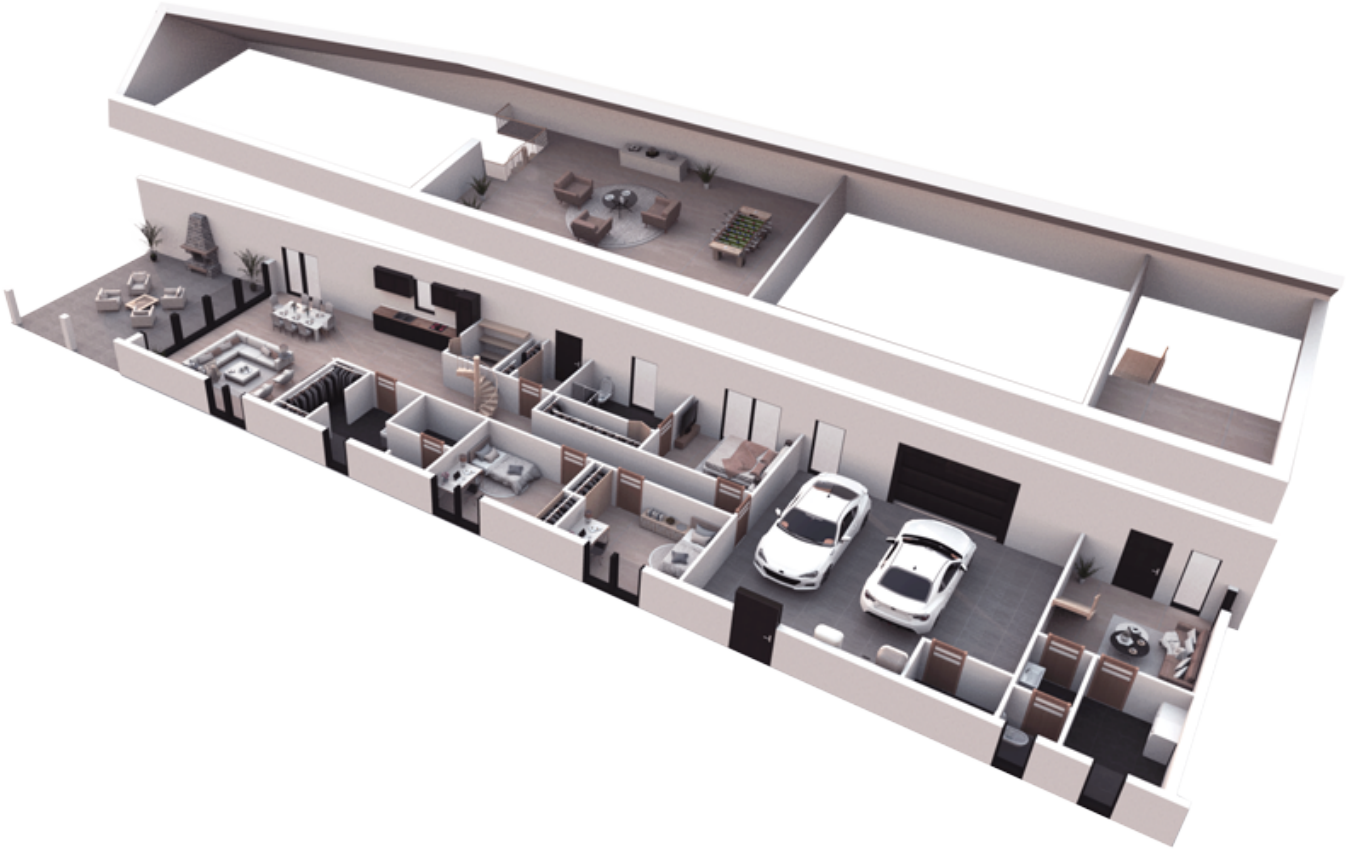




# 1ST FLOOR PLAN

101 CORRIDOR	4,79 m <sup>2</sup>
102 HALL-CORRIDOR	14,55 m <sup>2</sup>
103 PANTRY	3,77 m <sup>2</sup>
104 BATHROOM	7,71 m <sup>2</sup>
105 CLOSET	3,18 m <sup>2</sup>
106 PARENTS BEDROOM	11,45 m <sup>2</sup>
107 GARAGE	56,99 m <sup>2</sup>
107 KITCHEN-LIVING ROOM	56,99 m <sup>2</sup>
107 BATHROOM	2,78 m <sup>2</sup>
108 WORKROOM	15,16 m <sup>2</sup>
109 PANTRY	6,68 m <sup>2</sup>
110 BATHROOM	2,10 m <sup>2</sup>
111 BATHROOM	1,28 m <sup>2</sup>

112 CHILDRENS ROOM	11.46m <sup>2</sup>
113CHILDRENS ROOM	11.45 m <sup>2</sup>
114 SAUNA	2,95 m <sup>2</sup>
115 BATHROOM	8,58 m <sup>2</sup>
116 CLOSET	3,61 m <sup>2</sup>
A01 MEZZANINE	31,17 m <sup>2</sup>
A02 MEZZANINE	4,25 m <sup>2</sup>
<b>TOTAL:</b>	<b>260,81 m<sup>2</sup></b>



# 3D PLAN