

# THE CUPCAKE STOREBOX

---

LIVING AREA	99.7
TOTAL AREA	150.03
NUMBER OF FLOORS	1
ROOF SLOPE	30 / 1.4
BUILDING AREA	250.59
LENGTH	21.24
WIDTH	20.21
HEIGHT	6.51

---

PRICE ~~€ 2.928~~ **€ 2.420**

## HOUSE PROJECT THE CUPCAKE STOREBOX

THE CUPCAKE STOREBOX is a modern single-storey house project inspired by the whole life itself. It is a perfect combination of high quality, reasonable construction, and maintenance costs. Typical technical drawing saves your finances and project costs. Planned architectural solutions are always visually clear to the customer. This modern house project is characterized by the specific harmony of shapes and construction combinations. A classic gable roof goes together with a flat roof.

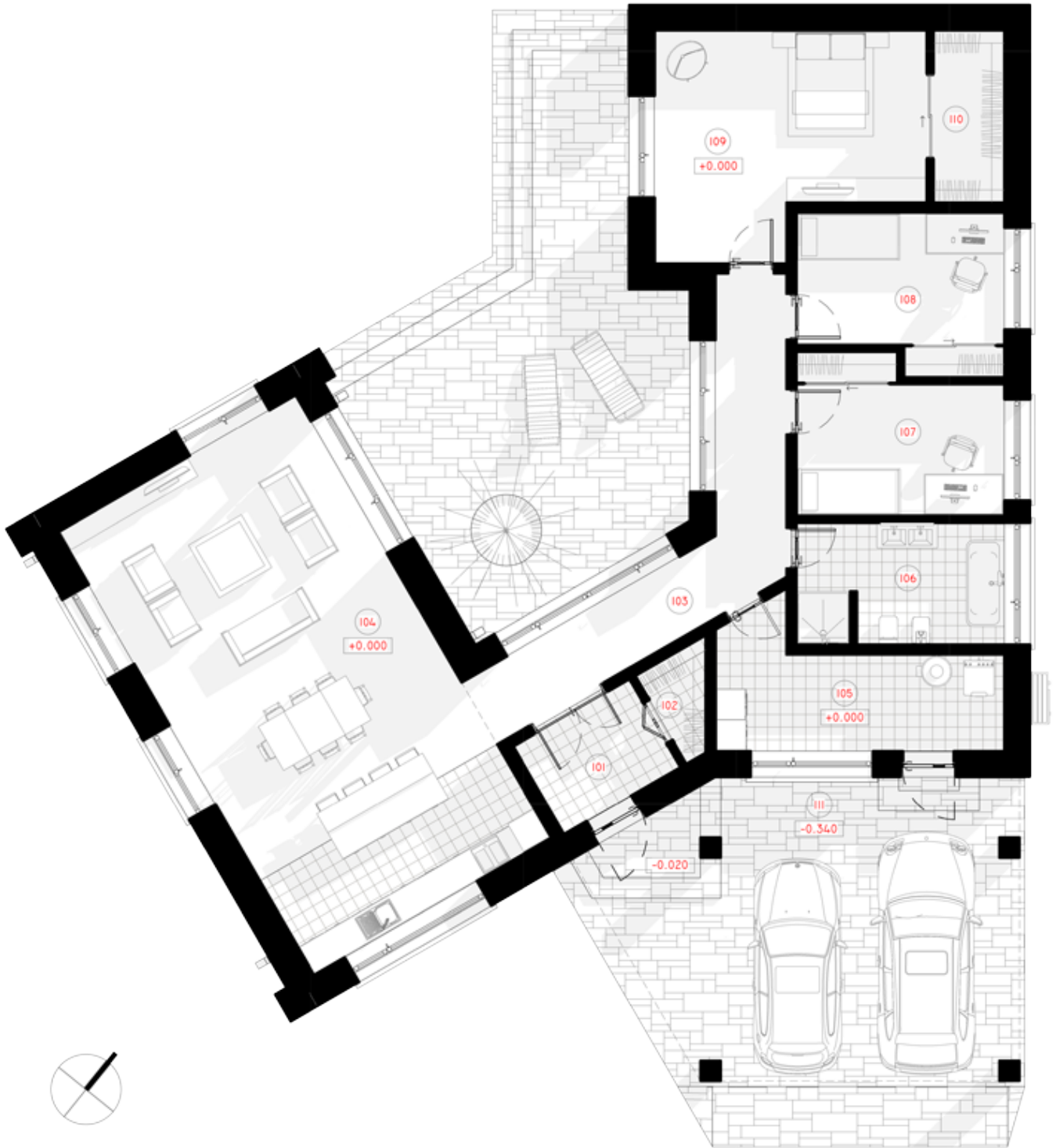
Typical technical drawing proves the fact that quality design and modern architecture can be affordable for both: families disposing of a fortune and those who have limited income. Functionality, aesthetics, quality, and innovation are the main features of modern home projects. Spacious 150.03 sq. meters (99.7 sq. meters of living space) single-storey house project pays special attention to the living area, which has large windows, and 54, 50 sq. m. meters of the open living room. It is perfect for receiving guests, family, or business lunch. The main accent of this house, typical for a cooler climate zone, is 5.28 sq. meters tambour. It is designed to stop the spread of cold into living zones.

16.48 sq. meters hall connects all the rooms on the ground floor. The layout of the house has plenty of space for two children's rooms (11.93 square meters), a master bedroom (21.34 square meters), a small cloakroom (2.03 square meters). 44.45 square meters of the shed can fit in family cars.

The living area for guests and family members in the different parts of the building moves family bedrooms further away from the communication and family meeting area. This modern house project will make your dreams come true.







# 1ST FLOOR PLAN

---

101 CORRIDOR

5.28 m<sup>2</sup>

---

102 CLOSET

2.03 m<sup>2</sup>

---

103 HALL-CORRIDOR	16.48 m <sup>2</sup>
104 KITCHEN-LIVING ROOM	54.50 m <sup>2</sup>
105 BOILER ROOM	12.09 m <sup>2</sup>
106 BATHROOM	9.69 m <sup>2</sup>
107 CHILDREN`S ROOM	11.93m <sup>2</sup>
108 CHILDREN`S ROOM	11.93 m <sup>2</sup>
109 PARENTS' BEDROOM	21.34 m <sup>2</sup>
110 CLOSET	4.76 m <sup>2</sup>
111 CARPORT	44.45 m <sup>2</sup>
<b>TOTAL:</b>	<b>194.48 m<sup>2</sup></b>



# 3D PLAN