

# THE LEGO BOX

---

LIVING AREA	113.78
TOTAL AREA	178.31
NUMBER OF FLOORS	2
ROOF SLOPE	1.4
BUILDING AREA	141.31
LENGTH	9.82
WIDTH	16.62
HEIGHT	7.71

---

PRICE ~~€ 2.928~~ € 2.420

## HOUSE PROJECT THE LEGO BOX

Do you have children? They're curious, stumbling, always messing around the house, entering the places which aren't designed for them? Then this repetitive two-storey house project is a smart decision for you.

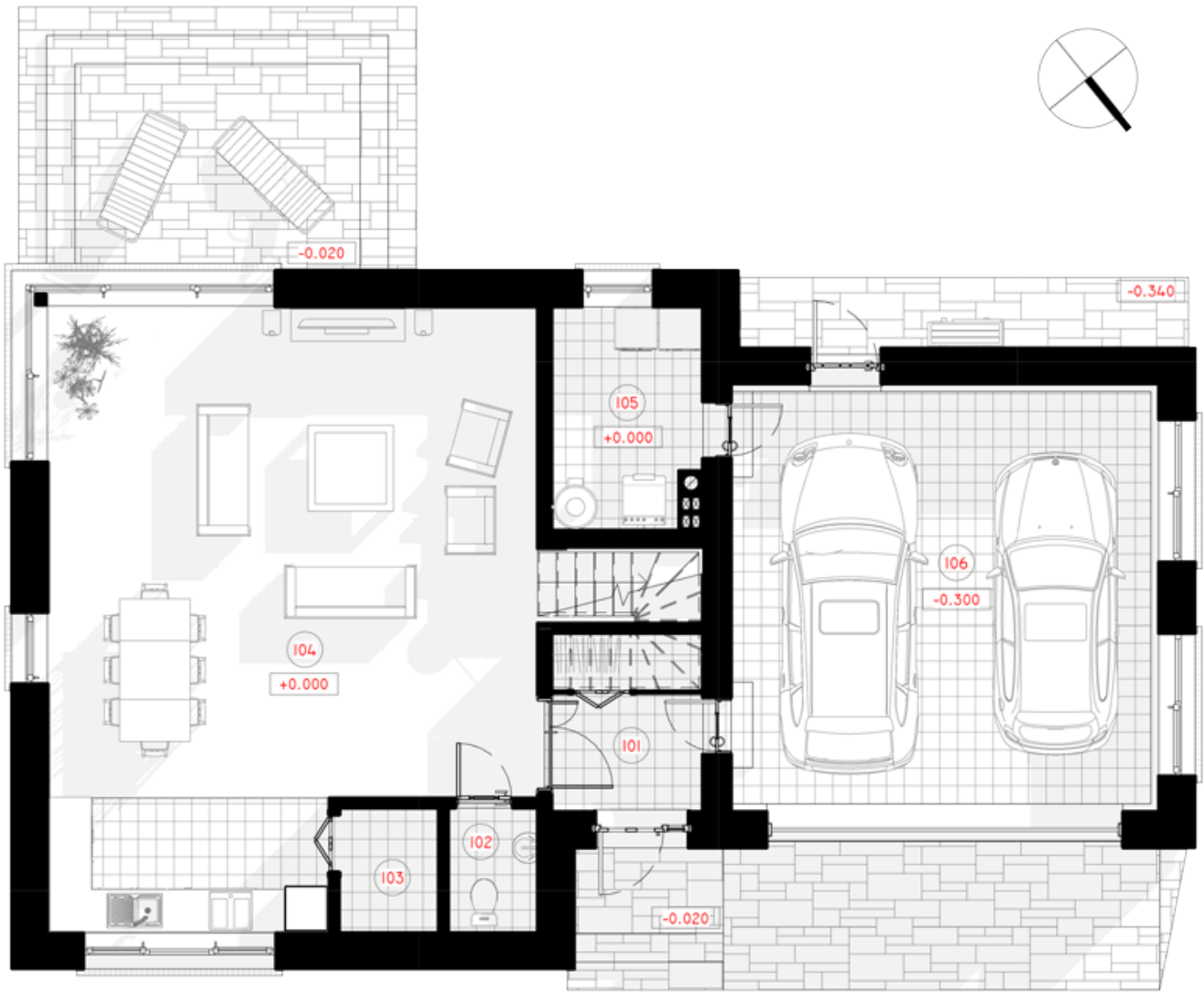
If you like romance, a two-storey house can be equipped with a modern classic-style staircase with turns. It can be a perfect corner for children to play, hide, under the stairs, enter the imaginary world. Such a secret corner develops the imagination of children, keeps the best memories of a happy childhood for a long time. Protective partitions on the windows serve as a safety issue. Modern architectural solutions will allow you to achieve A + energy, efficiency class. Tambour designed in the house helps to save heat, and creates a more useful living space.

Living room – the heart of the house, where the family gathers together, cooking, celebrating holidays, and dining. When the days are getting shorter, the winds are blowing, the family can have a great evening admiring the flame, listening to the crackling of firewood by the fireplace. There are large windows in the house. Sunlight easily comes every morning. Upstairs, there are three bedrooms. The layout of the house is rationally divided into a reception area and a private family rest zone on the second floor. The boiler is installed further from the living quarters, this protects the reception

area from the extra smell. The utility room is a reasonable solution for keeping maintenance and gardening tools. The garage can fit in 2 family cars.





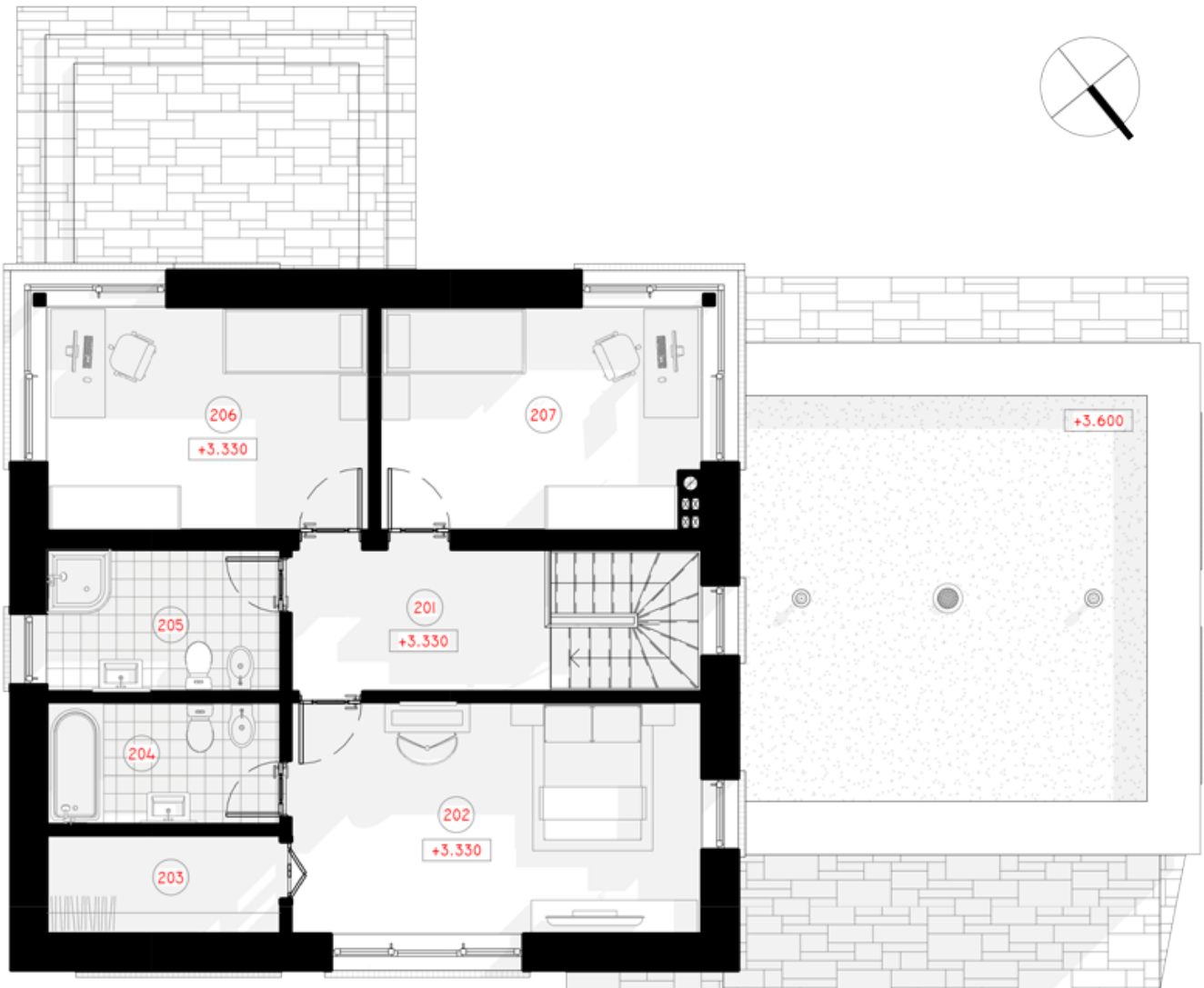


# 1ST FLOOR PLAN

101 CORRIDOR	5.28 m <sup>2</sup>
102 BATHROOM	2.20 m <sup>2</sup>
103 PANTRY	2.46 m <sup>2</sup>
104 KITCHEN-LIVING ROOM	54.98 m <sup>2</sup>
105 BOILER ROOM	6.35 m <sup>2</sup>
106 GARAGE	36.00 m <sup>2</sup>

**TOTAL:**

107.27 m<sup>2</sup>



# 2ND FLOOR PLAN

---

101 HALL-STAIRCASE	7.28 m <sup>2</sup>
102 PARENTS BEDROOM	18.78 m <sup>2</sup>
103 CLOSET	4.61 m <sup>2</sup>
104 BATHROOM	5.66 m <sup>2</sup>
105 BATHROOM	6.58 m <sup>2</sup>
106 CHILDRENS ROOM	14.22 m <sup>2</sup>
107 CHILDRENS ROOM	13.92 m <sup>2</sup>
<b>TOTAL:</b>	<b>71.05m<sup>2</sup></b>

---







# 3D PLAN