

**NPS**

# THE MEMORY BOX

---

LIVING AREA	116.86
TOTAL AREA	216.48
NUMBER OF FLOORS	1
ROOF SLOPE	1.4
BUILDING AREA	271.00
LENGTH	21.10
WIDTH	18.33
HEIGHT	5.08

---

PRICE

~~€ 2.928~~

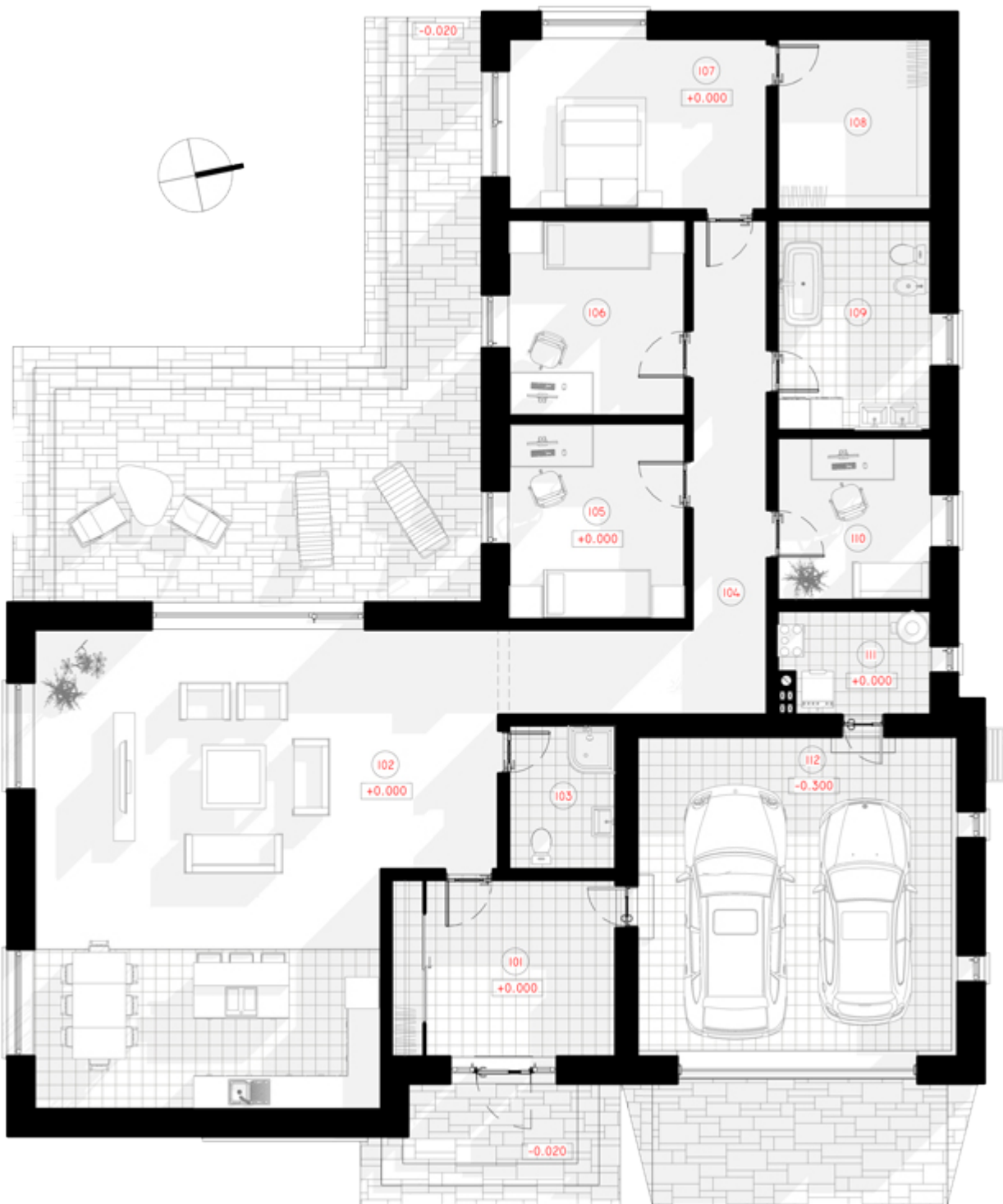
**€ 2.420**

**HOUSE PROJECT THE MEMORY BOX**









# 1ST FLOOR PLAN

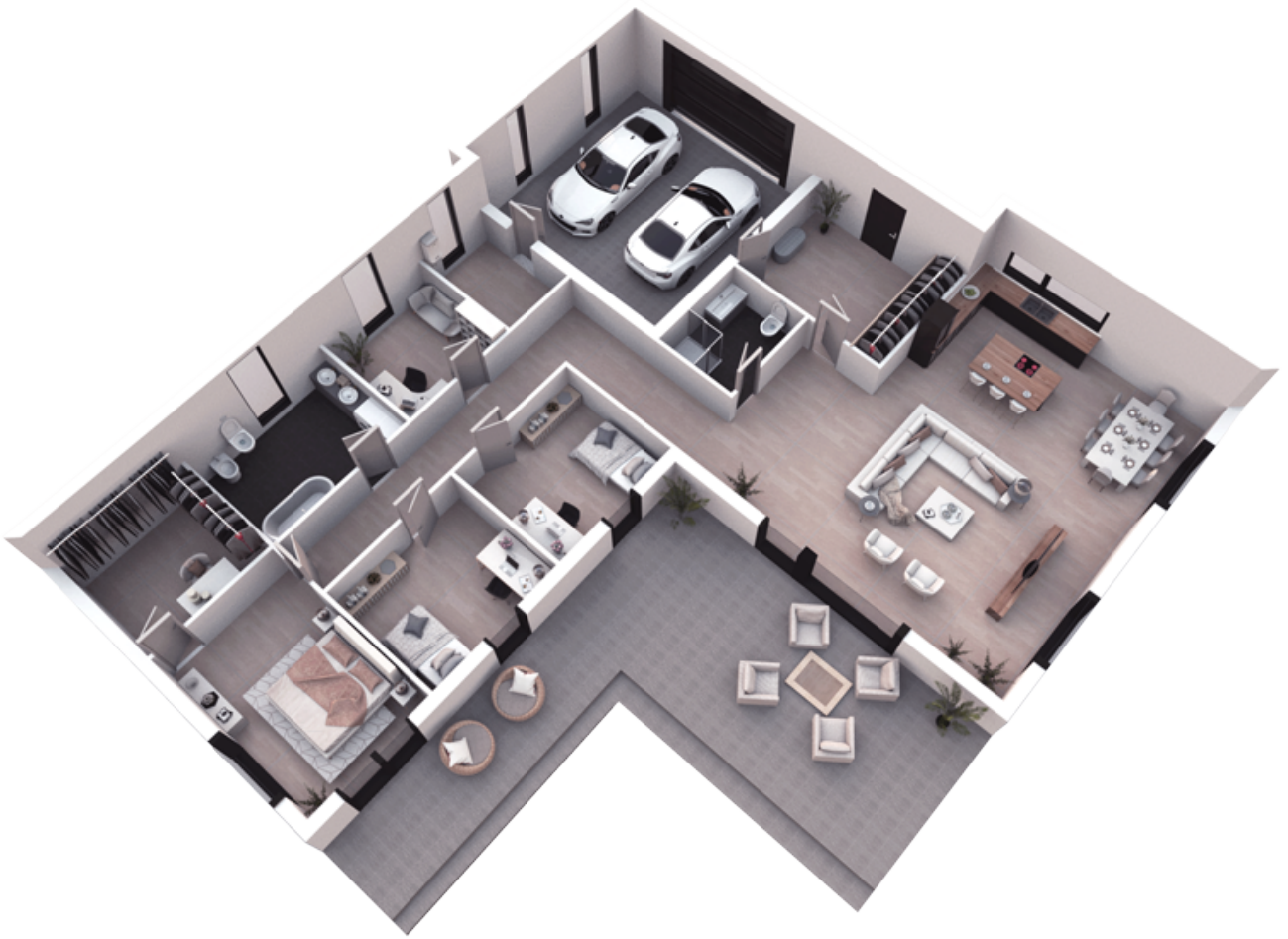
101 CORRIDOR

13.90 m<sup>2</sup>

102 KITCHEN-LIVING ROOM

68.40 m<sup>2</sup>

103 BATHROOM	5.40 m <sup>2</sup>
104 HALL-CORRIDOR	18.50 m <sup>2</sup>
105 CHILDREN`S ROOM	12.11 m <sup>2</sup>
106 CHILDREN`S ROOM	12.11 m <sup>2</sup>
107 PARENTS' BEDROOM	15.49 m <sup>2</sup>
108 CLOSET	9.18 m <sup>2</sup>
109 BATHROOM	11.31 m <sup>2</sup>
110 WORKROOM	8.75 m <sup>2</sup>
111 BOILER ROOM	5.33 m <sup>2</sup>
112 GARAGE	36.00 m <sup>2</sup>
<b>TOTAL:</b>	<b>216.48 m<sup>2</sup></b>



# 3D PLAN