

**NPS**

# THE JEWELRY BOX II

---

ROOF SLOPE	1.4
BUILDING AREA	106.56
LENGTH	15.44
WIDTH	7.04
HEIGHT	3.48

---

PRICE FROM

€ 19.900

**BENEFITS**  
THE JEWELRY BOX II



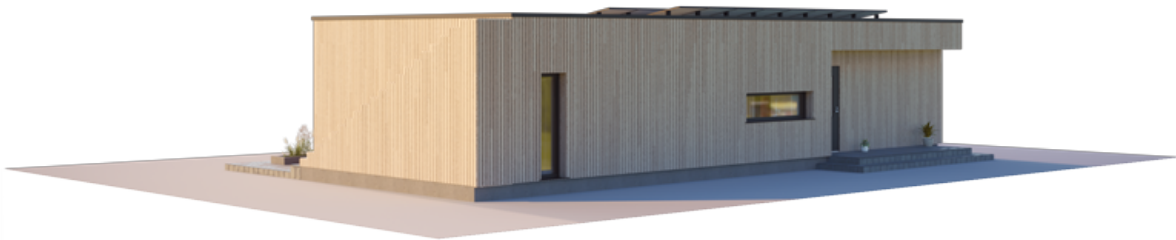
The standard loft solution is an original interpretation of the Jewelry Box house model. The lightweight steel frame technology of this loft-style house combines the spirit of modern urbanism, the durability of the materials, the environmentally friendly architecture, and a production and construction pace unparalleled in the market.

This house is characterised by a strict rectangular adjacent wall. In this sense, it resembles a jewellery box where your most precious diamonds - your family members - will live. The tasteful Jewelry Box Loft embodies one of life's greatest goals - the responsible nurturing of a strong and happy family.

It is almost impossible to find a naturally formed cube or rectangular contiguous object in nature. One of the few stunning exceptions are diamonds, which on rare occasions can be found in an almost perfect cube shape. It may be that it is the rarity of this shape that has given it a sacred and almost mystical significance.

The *Jewelry Box* house is for those who protect and care for their most precious jewels - their family and loved ones. A Jewelry Box House, which has tastefully adapted age-old values to modern times, embodies one of life's greatest goals - the responsible nurturing of a strong and happy family.

***Jewelry Box* - a jewellery house for those who value family life.**





# BASIC



---

WALLS - LPPK

-

---

OVERLAY - LPPK

-

---

STAIRS - LPPK

-

---

ROOF - LPPK

-

---

PRICE  
€19.900

---

LPPK - Lightweight thin-walled frame construction.

Prices are for prefabricated structures ready for assembly at the factory.

Prices are without garage and carport.

# ECONOMIC



---

WALLS - LPPK	-
OVERLAY - LPPK	-
ROOF - LPPK	-
STAIRS - LPPK	-
INSULATION - MULTILAYER PANELS	-
WINDOWS, EXTERIOR DOORS - PVC	-
PRICE	
€41.120	

---

LPPK - Lightweight thin-walled frame construction.

Prices are for prefabricated structures ready for assembly at the factory.

Prices are without garage and carport.

# STANDART



---

WALLS - LPPK

-

---

OVERLAY - LPPK

-

---

ROOF - LPPK

-

---

STAIRS - LPPK

-

---

INSULATION - MULTILAYER PANELS

-

---

WINDOWS, EXTERIOR DOORS - PVC

-

---

FACADE DECORATION

-

---

PRICE  
€55.200

---

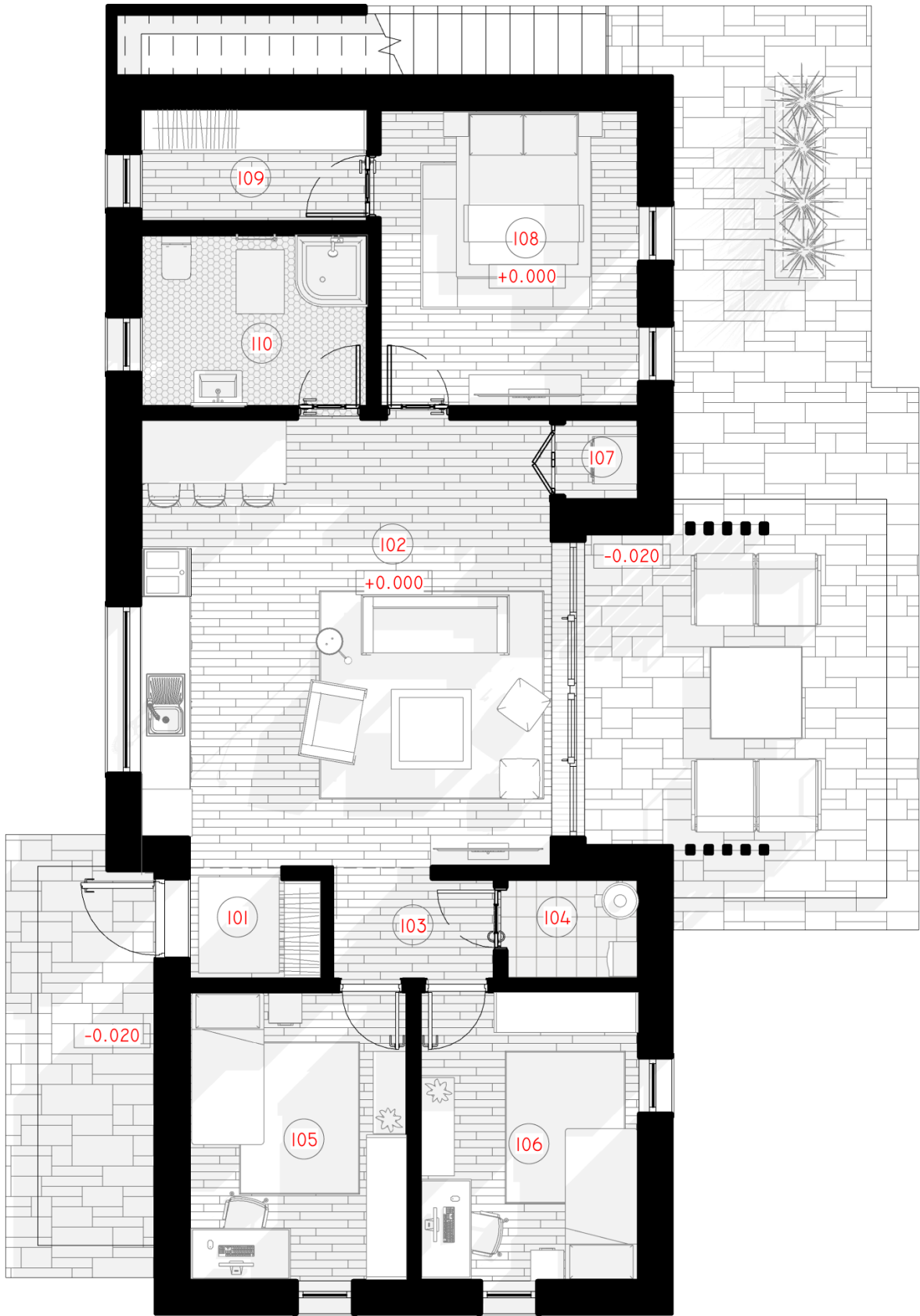
LPPK - Lightweight thin-walled frame construction.

Prices are for prefabricated structures ready for assembly at the factory.

Prices are without garage and carport.







# 1ST FLOOR PLAN

---

101 TAMBUR	3.69 m <sup>2</sup>
102 KITCHEN - LIVING ROOM	22.38 m <sup>2</sup>
103 CHILD'S ROOM	12.44 m <sup>2</sup>
104 CHILD'S ROOM	11.17 m <sup>2</sup>
105 PANTRY	3.00 m <sup>2</sup>
106 WC	5.03 m <sup>2</sup>
107 BEDROOM	14.81 m <sup>2</sup>
107 WC	5.90 m <sup>2</sup>
<b>TOTAL:</b>	<b>78.42 m<sup>2</sup></b>

---