

THE RUSTY BOX

| | |
|------------------|--------|
| LIVING AREA | 89.36 |
| TOTAL AREA | 199.3 |
| NUMBER OF FLOORS | 1 |
| ROOF SLOPE | 1.4 |
| BUILDING AREA | 238.87 |
| HOUSE LENGTH | 19.61 |
| HOUSE WIDTH | 23.22 |
| HOUSE HEIGHT | 4.42 |

€ 29.700

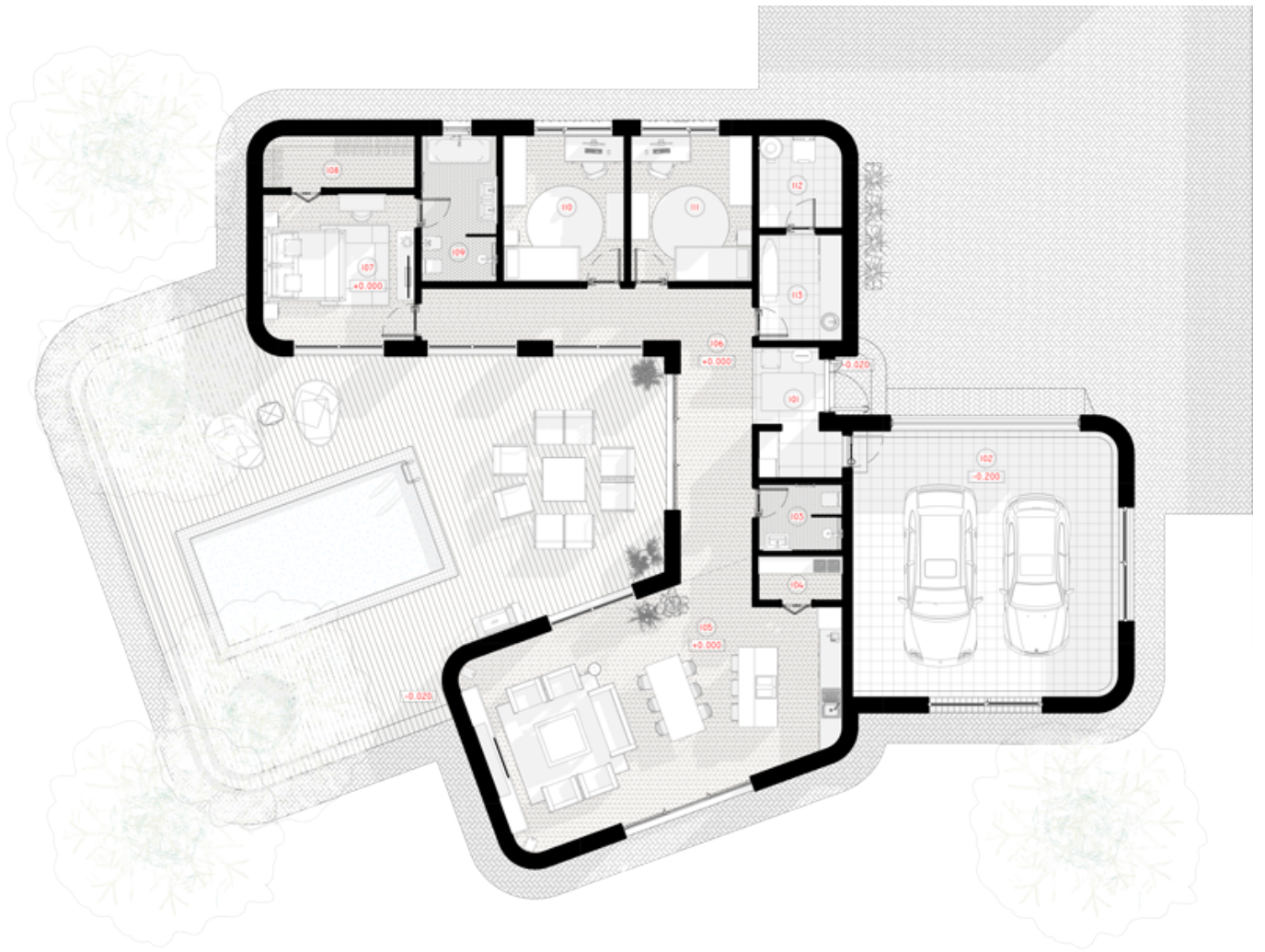
Project of a single-story building: THE RUSTY BOX

The exterior finish of the house, rounded corners, and carefully chosen corten steel facade create a balanced, distinctive, and modern appearance that harmonizes well in both urban and suburban settings. This is made possible by a quickly assembled house made of a lightweight steel frame, providing the home with a contemporary facade and a practical structure.

This home boasts a living area of 89.36 m², with a total area of 199.3 m². The single-story structure with a U-shaped design, an inner courtyard, and a terrace not only ensure the family's privacy but also offer shelter and tranquility. Large windows leading to the terrace expand the living spaces and harmonize your courtyard environment with the interior spaces. The layout of the house is rational, as all living, leisure, and utility areas are separated to create a comfortable and functional living plan structure.







1ST FLOOR PLAN

| | |
|---------------------------|----------------------|
| 101 TAMBOUR | 6.49 m ² |
| 102 GARAGE | 48.85m ² |
| 103 WC | 3.83 m ² |
| 104 PANTRY | 2.53 m ² |
| 105 LIVING ROOM - KITCHEN | 49.40 m ² |
| 106 HOLL | 23.57 m ² |

| | |
|---------------------|-----------------------------|
| 107 PARENTS BEDROOM | 15.32 m ² |
| 108 WARDROBE | 5.52 m ² |
| 109 WC | 7.68 m ² |
| 110 CHILDREN'S ROOM | 12.32 m ² |
| 111 CHILDREN'S ROOM | 12.32 m ² |
| 112 BOILER ROOM | 5.31 m ² |
| 113 LAUNDRY | 6.16 m ² |
| TOTAL: | 199.30 m² |