

NPS

THE SUNBEAM SPECTACLE ORIGINAL

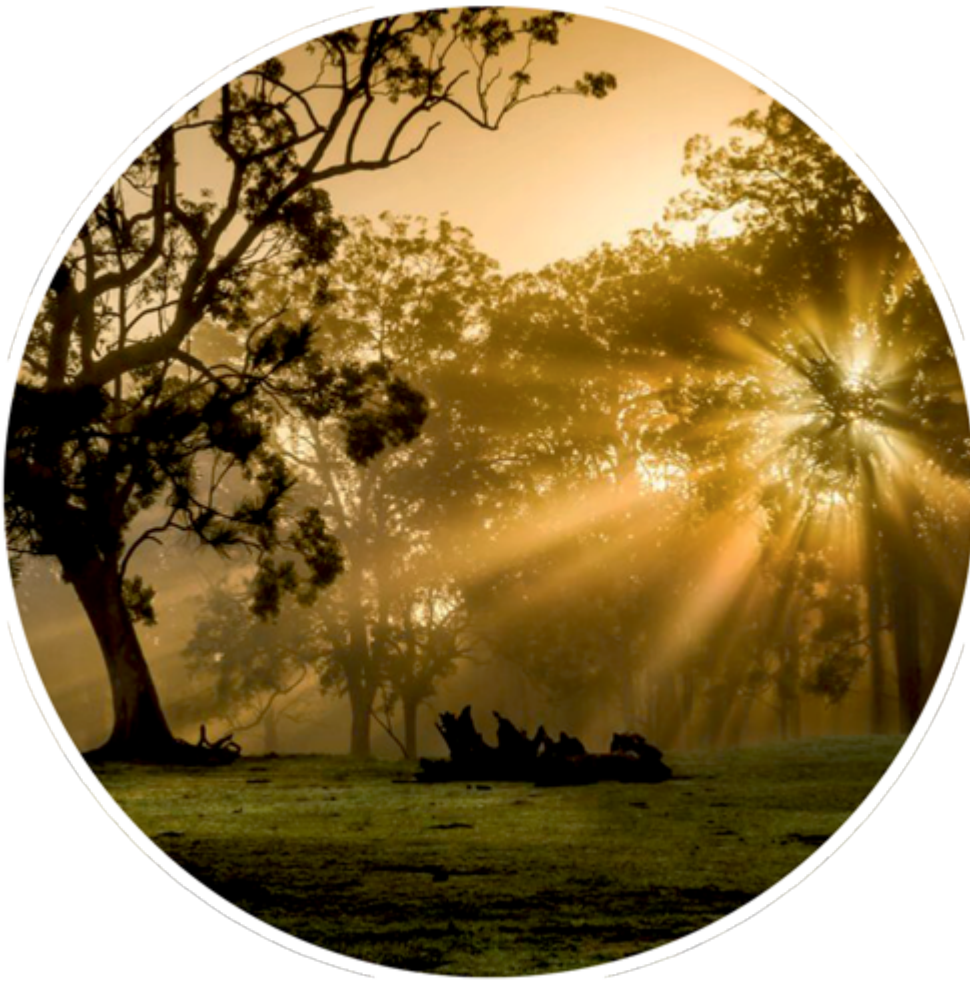
| | |
|------------------|-----------|
| LIVING AREA | 39.67 |
| TOTAL AREA | 49.85 |
| NUMBER OF FLOORS | 1 |
| ROOF SLOPE | 9; 25; 47 |
| BUILDING AREA | 78.18 |
| LENGTH | 6.00 |
| WIDTH | 13.05 |
| HEIGHT | 5.00 |

PRICE FROM

€ 11.680

BENEFITS

THE SUNBEAM SPECTACLE ORIGINAL

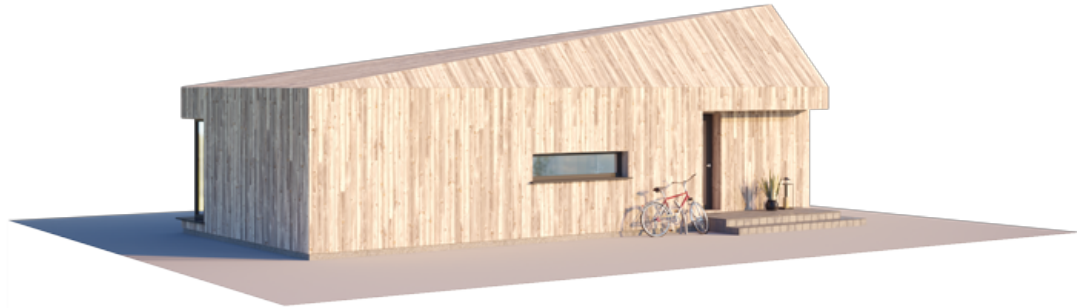


The standard solution is an original interpretation of the Sunbeam Spectacle house model. The lightweight steel frame technology of this loft-style house has enabled a combination of the spirit of modern urbanism, atypical shapes, the durability of materials, environmentally friendly architecture, and a pace of production and construction unparalleled in the market.

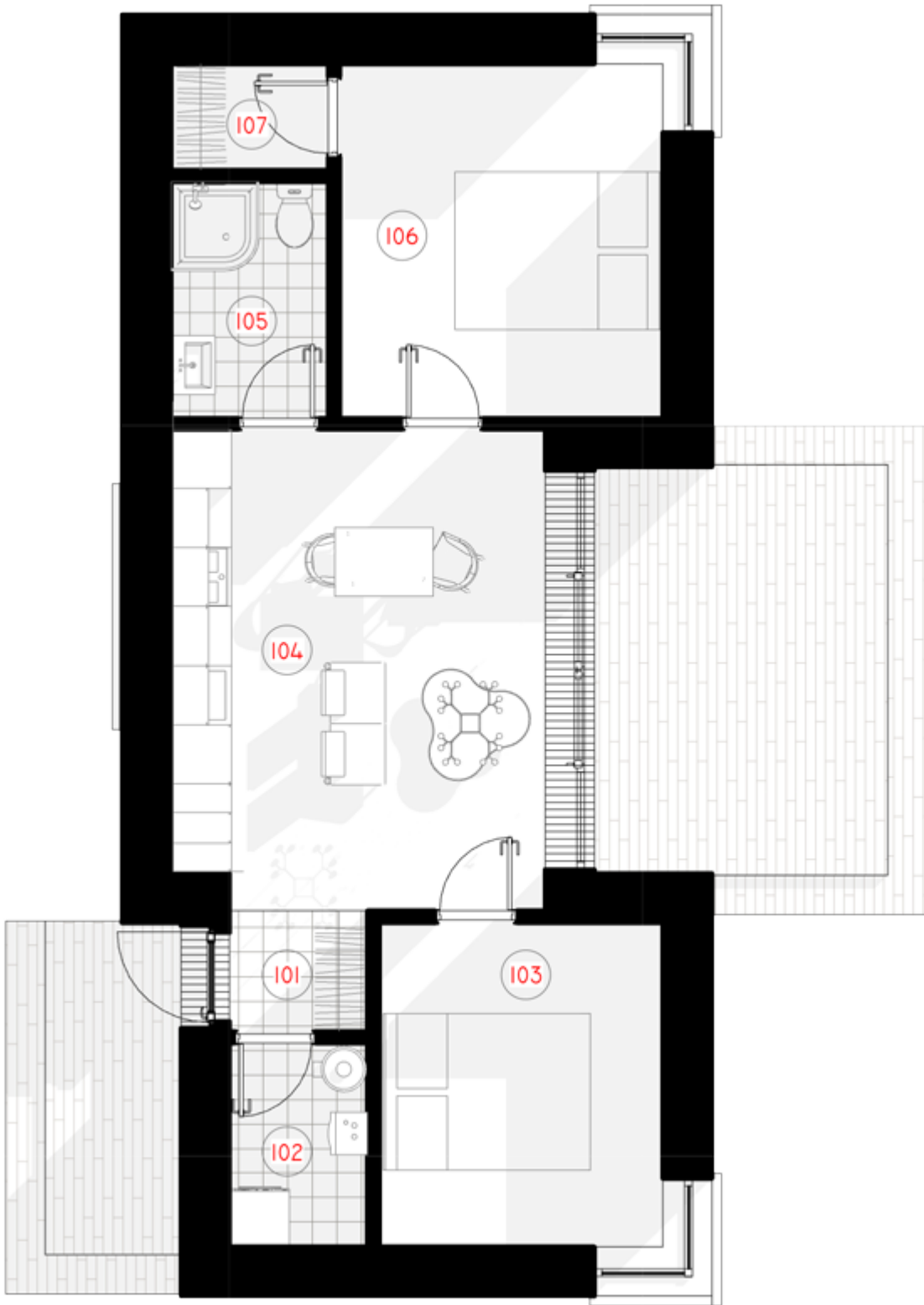
The idea for the exterior of your future home was inspired by the sun and its morning spectacles, embodied by the roof lines that sweep down from one point. You are the magicians of the modern world, making the impossible possible through your success in life. We designed the Sunbeam Spectacle Loft for people with this mindset. Because you see what others don't.

Sunbeam Spectacle is designed for people who are gifted with the power to see hidden meanings and possibilities in the everyday objects of life. You are the magicians of the modern world, making the impossible possible in your life. You don't believe that hard and exhausting work is the only way to success. Why take the conventional path when you can go wherever you dream of by using your charisma, imagination and magical abilities? The Sunbeam Spectacle House expresses this philosophy of life, filled with the charm of your personality.

We have created a home for today's magicians. And we called it the "ray play" of the sun.







1ST FLOOR PLAN

| | |
|---------------------------|----------------------------|
| 101 TAMBOURINE | 1,71 m ² |
| 102 AUXILIARY ROOM | 2,91 m ² |
| 103 BEDROOM | 9,50 m ² |
| 104 LIVING ROOM - KITCHEN | 18,35m ² |
| 105 SANITARY ROOM | 3,84 m ² |
| 106 BEDROOM | 11,81 m ² |
| 107 WARDROBE | 1,73 m ² |
| TOTAL: | 49,85 m² |
