

**NPS**

# THE SWEET CUPCAKE ORIGINAL

---

LIVING AREA	39.67
TOTAL AREA	49.85
NUMBER OF FLOORS	1
ROOF SLOPE	32
BUILDING AREA	78.30
LENGTH	13.05
WIDTH	6.00
HEIGHT	5.00

---

PRICE FROM

**€ 11.680**

**BENEFITS**  
THE SWEET CUPCAKE ORIGINAL



This Sweet Cupcake house is a modern solution for sustainable and environmentally (and budget-friendly) living. The single-storey solution perfectly brings out the aesthetics of this atypical façade geometry. This compact house is perfect for a couple, as well as a holiday retreat for the whole family.

Now ask yourself what the traditional gabled roof of this house reminds you of. Yes, the answer lies in the name of this house model. The Sweet Cupcake loft design will help you to emphasise your values: the desire to dream, to inspire others, to foster harmony and to believe in the power of romance. Let life in the loft be as sweet as a cupcake.

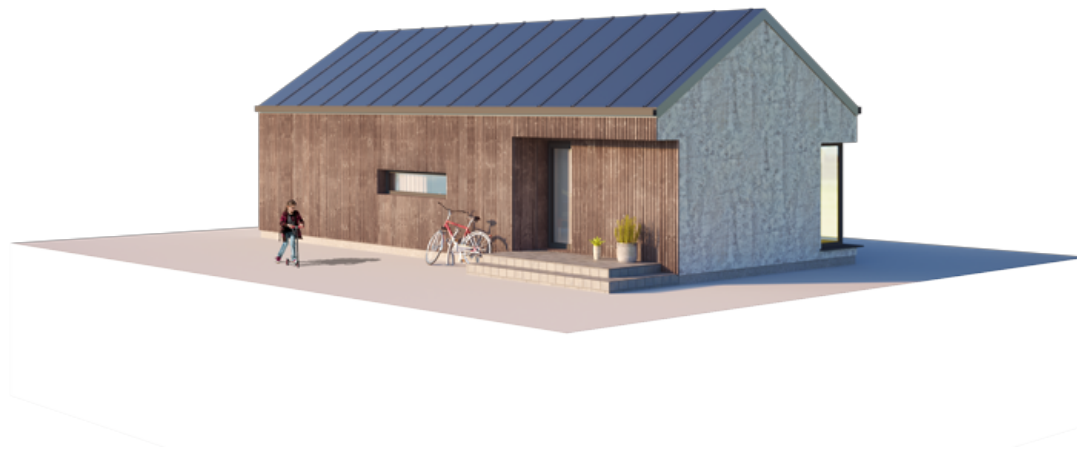
The traditional shape of the Sweet Cupcake house represents a cube transformed by an upward internal force. The result is a nostalgic symmetrical gable roof that symbolises purity and traditional home values.

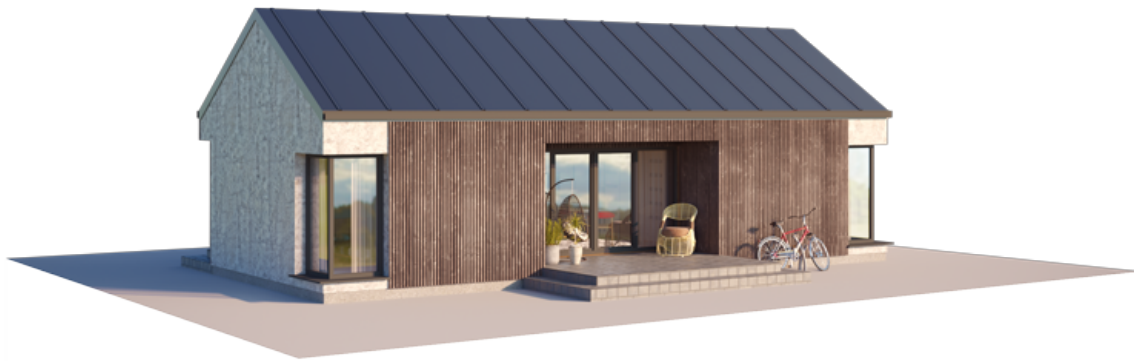
Sweet Cupcake is a modern interpretation of a traditional gable-roofed house. The Sweet Cupcake design strikes a delicate balance between traditional, romantic home comfort and innovative exterior solutions with extra-large windows. This concept is designed for people who know how to dream and see more good than bad in everyday life. Even if the rest of the world outside the walls of your home is going mad. The Sweet Cupcake design will help you to aesthetically emphasise your values: positivity, personal integrity, the ability to dream and inspire others, and the harmony of life.

**In the Sweet Cupcake house, the sweetness of life is tasted every day.**

The Sweet Cupcake house model is adaptable to 50m<sup>2</sup>, 80m<sup>2</sup>, 110m<sup>2</sup>, 140m<sup>2</sup> living spaces. You can choose between one-storey and two-storey (loft-style) house solutions. Like other NP5 homes, Sweet

Cupcake homes can be purchased with a choice of finishes and furnishing levels. You can buy a ready-to-live-in house (even furnished) or take your time, dream longer and design the interior yourself.





# BASIC



---

WALLS - LPPK

-

---

OVERLAY - LPPK

-

---

STAIRS - LPPK

-

---

ROOF - LPPK

-

---

PRICE  
€11.680

---

LPPK - Lightweight thin-walled frame construction.

Prices are for prefabricated structures ready for assembly at the factory.

Prices are without garage and carport.

# ECONOMIC



---

WALLS - LPPK	-
OVERLAY - LPPK	-
ROOF - LPPK	-
STAIRS - LPPK	-
INSULATION - MULTILAYER PANELS	-
WINDOWS, EXTERIOR DOORS - PVC	-
PRICE €25.700	-

---

LPPK - Lightweight thin-walled frame construction.

Prices are negotiated according to the choice of materials. Prices are for prefabricated structures ready for assembly at the factory.

Prices are without garage and carport.

# STANDART



---

WALLS - LPPK

-

---

OVERLAY - LPPK

-

---

STAIRS - LPPK

-

---

ROOF - LPPK

-

---

INSULATION - MULTILAYER PANELS

-

---

WINDOWS, EXTERIOR DOORS, PVC

-

---

FACADE DECORATION

-

---

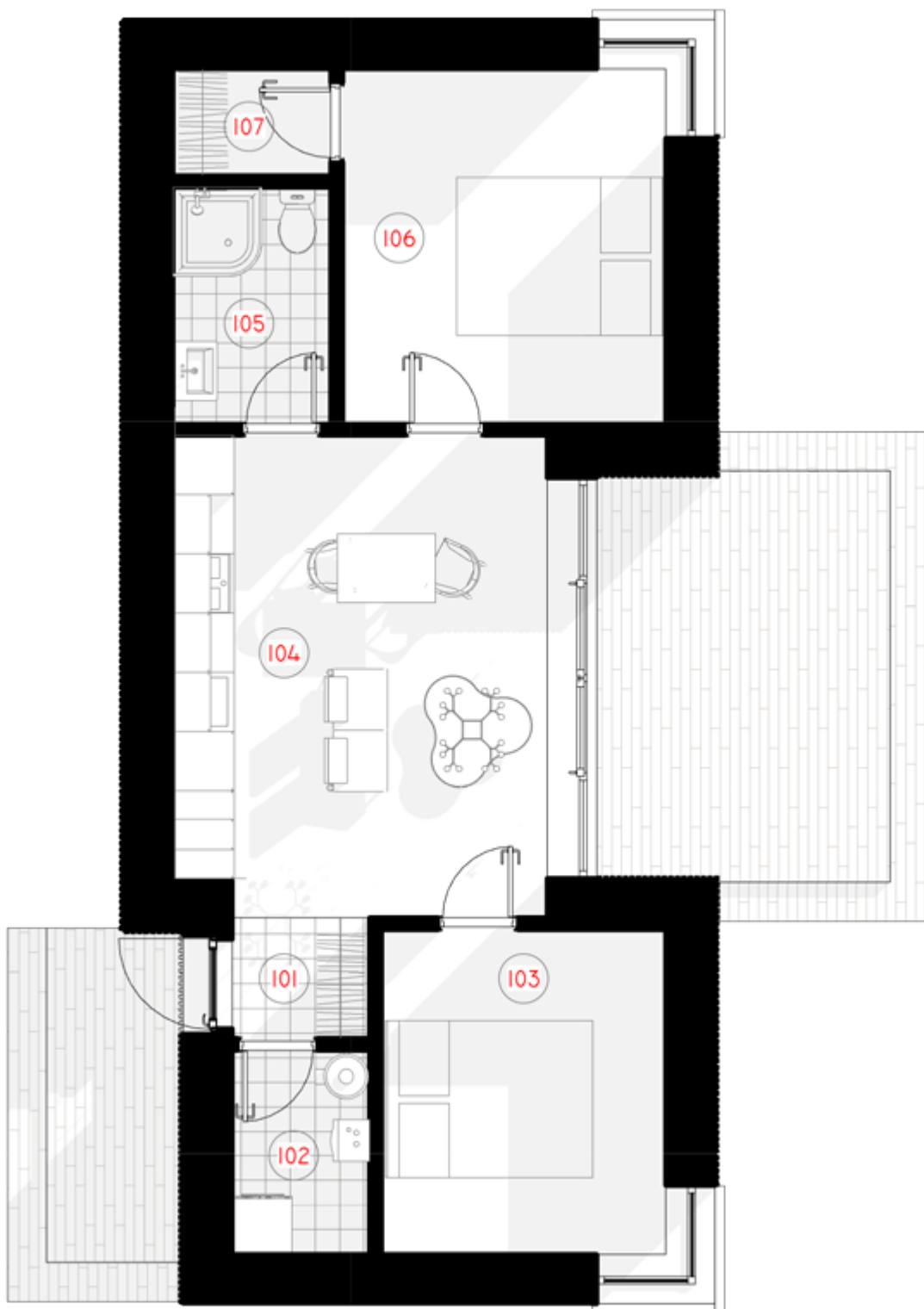
PRICE  
€34.500

---

LPPK - Lightweight thin-walled frame construction.

Prices are negotiated according to the choice of materials. Prices are for prefabricated structures ready for assembly at the factory.

Prices are without garage and carport.





# 1ST FLOOR PLAN

---

101 TAMBOURINE	1,71 m <sup>2</sup>
102 AUXILIARY ROOM	2,91 m <sup>2</sup>
103 BEDROOM	9,50m <sup>2</sup>
104 LIVING ROOM - KITCHEN	18,35 m <sup>2</sup>
105 SANITARY ROOM	3,84 m <sup>2</sup>
106 BEDROOM	11,81 m <sup>2</sup>
107 WARDROBE	1,73 m <sup>2</sup>
<b>TOTAL:</b>	<b>49,85 m<sup>2</sup></b>

---