

NPS

THE WILD WAVE EXTRA-SPACIOUS

LIVING AREA	39.5
TOTAL AREA	50
NUMBER OF FLOORS	1
ROOF SLOPE	8
BUILDING AREA	82,91
LENGTH	11,50
WIDTH	9,00
HEIGHT	4,50

PRICE FROM

€ 11.680

BENEFITS
THE WILD WAVE EXTRA-SPACIOUS

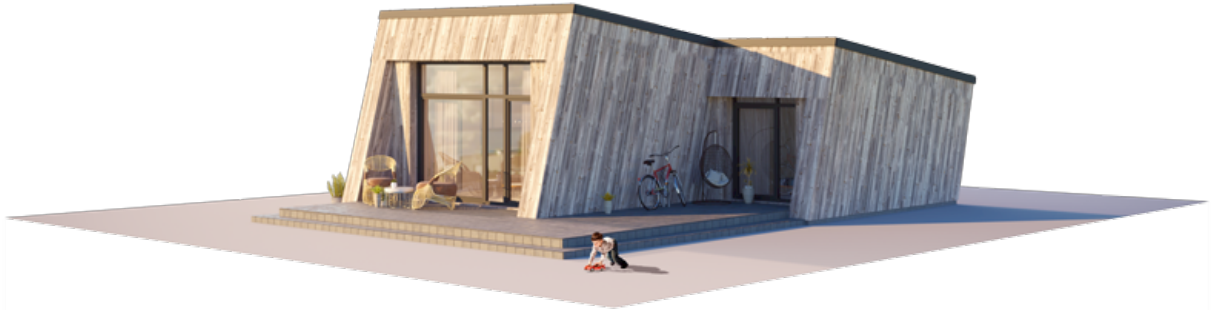


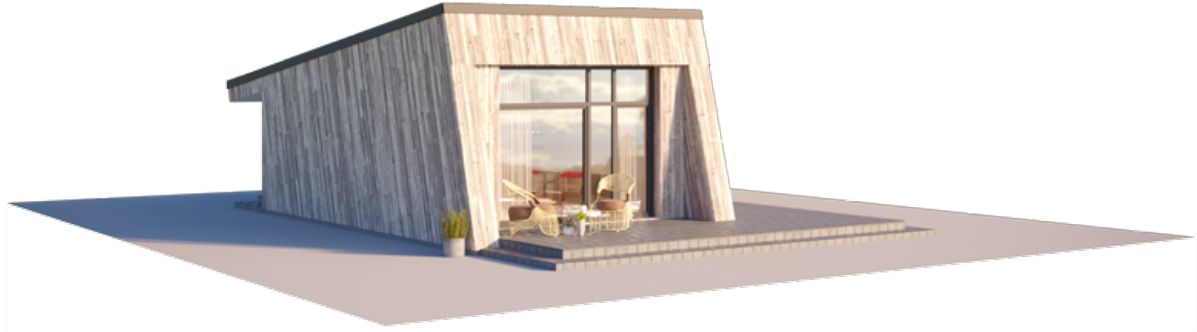
This Wild Wave house is a contemporary solution for sustainable and environmentally (and budget-friendly) living. The single-storey solution perfectly brings out the aesthetics of this atypical façade geometry. This compact house is perfect for a single person or a couple, as well as a holiday retreat for the whole family.

It's true that this house is not for everyone. It is for those who love freedom and cannot live without it. The shape of the Wild Wave Original House represents the breaking wave that represents freedom, washing away all your worries and troubles. There are many speakers about freedom. Wild Wave homes are for those who truly live it.

The Wild Wave House is for those who believe in freedom. Whether you are an individualist living alone, or have a family that is not subject to meaningless rules and restrictions, you are someone who does not take part in the rat race and is not influenced by the crowd. Because ordinary forms and ordinary lives are not for you. You are the explorer. A seeker. You are a dreamer. And you would not blink an eye if you took off your suit and tie so that you could enjoy, if only for a moment, a liberating moment of childish exuberance in the crashing waves.

The Wild Wave model is flexible and can be adapted to 50 m², 80 m², 110 m², 140 m² living or recreational areas. One- and two-story loft solutions are available. The Wild Wave model house can be purchased with different finishing and equipment levels.





BASIC



WALLS - LPPK	-
OVERLAY - LPPK	-
STAIRS - LPPK	-
ROOF - LPPK	-
PRICE	
€11.680	

LPPK - Lightweight thin-walled frame construction.

Prices are for prefabricated structures ready for assembly at the factory.

Prices are without garage and carport.

ECONOMIC



WALLS - LPPK	-
OVERLAY - LPPK	-
ROOF - LPPK	-
STAIRS - LPPK	-
INSULATION - MULTILAYER PANELS	-
WINDOWS, EXTERIOR DOORS - PVC	-
PRICE	
€25.700	

LPPK - Lightweight thin-walled frame construction.

Prices are negotiated according to the choice of materials. Prices are for prefabricated structures ready for assembly at the factory.

Prices are without garage and carport.

STANDART



WALLS - LPPK	-
--------------	---

OVERLAY - LPPK	-
----------------	---

STAIRS - LPPK	-
---------------	---

ROOF - LPPK	-
-------------	---

INSULATION - MULTILAYER PANELS	-
--------------------------------	---

WINDOWS, EXTERIOR DOORS, PVC	-
------------------------------	---

FACADE DECORATION	-
-------------------	---

PRICE	
€34.500	

LPPK - Lightweight thin-walled frame construction.

Prices are negotiated according to the choice of materials. Prices are for prefabricated structures ready for assembly at the factory.

Prices are without garage and carport.



1ST FLOOR PLAN

101	TAMBOURINE	2,64 m ²
102	SANITARY ROOM	3,31 m ²
103	CLOSET	2,23 m ²
104	BEDROOM	12,66 m ²
105	LIVING ROOM - KITCHEN	26,84 m ²
106	AUXILIARY ROOM	2,31 m ²
TOTAL:		50,00 m²
