

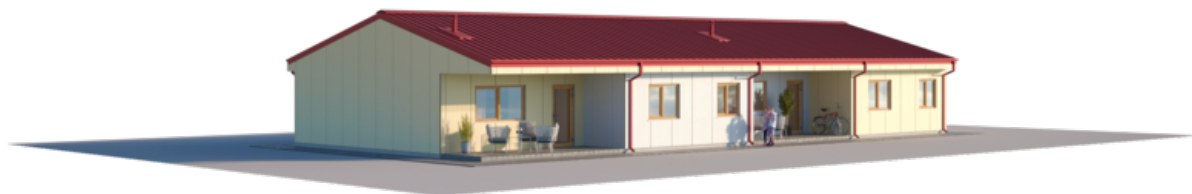
NPS

SOCIAL HOUSE

LIVING AREA	155.31
TOTAL AREA	184.16
NUMBER OF FLOORS	1

PRICE FROM

€ 24.636







BASIC



WALLS - LPPK

-

OVERLAY - LPPK

-

STAIRS - LPPK

-

ROOF - LPPK

-

PRICE
€24.636

LPPK - Lightweight thin-walled frame construction.

Prices are for prefabricated structures ready for assembly at the factory.

Prices are without garage and carport.

STANDART

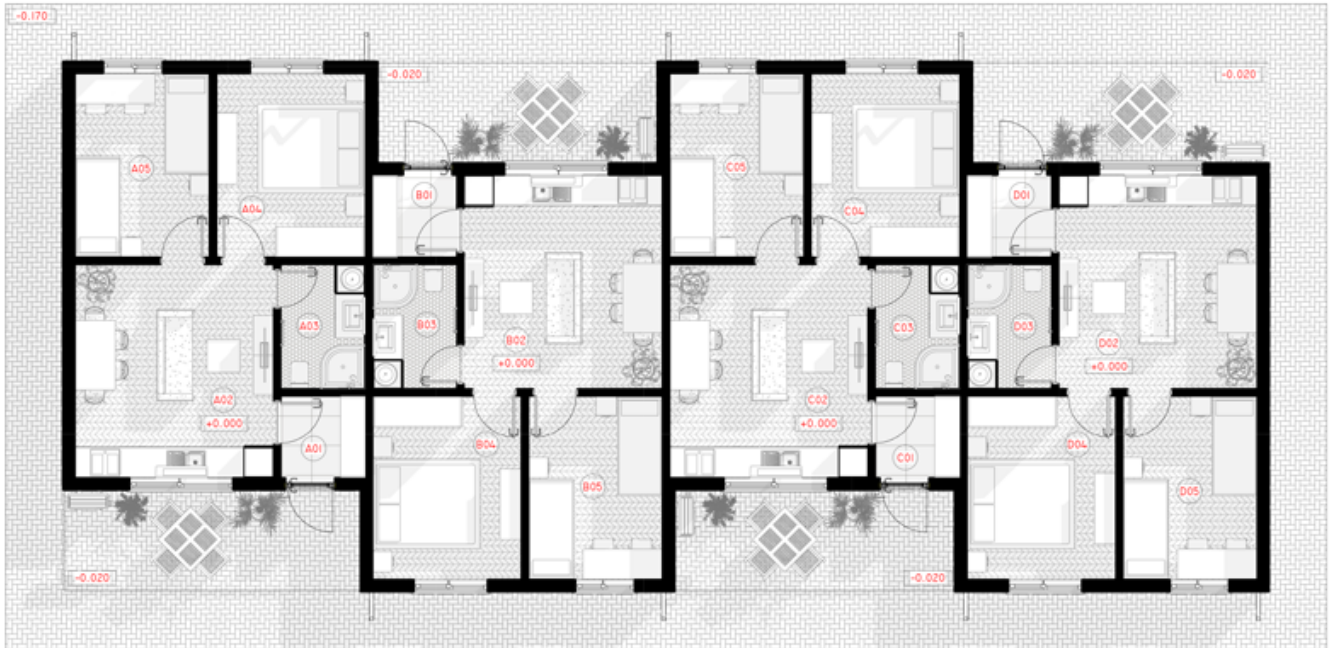


WALLS - LPPK	-
OVERLAY - LPPK	-
STAIRS - LPPK	-
ROOF - LPPK	-
INSULATION - MULTILAYER PANELS	-
WINDOWS, EXTERIOR DOORS, PVC	-
FACADE DECORATION	-
PRICE	
€58.067	

LPPK - Lightweight thin-walled frame construction.

Prices are negotiated according to the choice of materials. Prices are for prefabricated structures ready for assembly at the factory.

Prices are without garage and carport.



1ST FLOOR PLAN

01 TAMBOUR	2.89 m ²
02 LIVING - DINNING ROOM	17.41 m ²
03 BATHROOM	4.32 m ²
04 MASTER BEDROOM	11.27 m ²
05 BEDROOM	10.15 m ²
VISO:	46.04 m²