

**NFS**

# THE SWEET CUPCAKE LOFT "L" SHAPE II

---

LIVING AREA	91.87
TOTAL AREA	125.77
NUMBER OF FLOORS	2
ROOF SLOPE	45 ir 6
BUILDING AREA	184,42
LENGTH	18,15
WIDTH	16,30

---

PRICE FROM

## **ADVANTAGES**

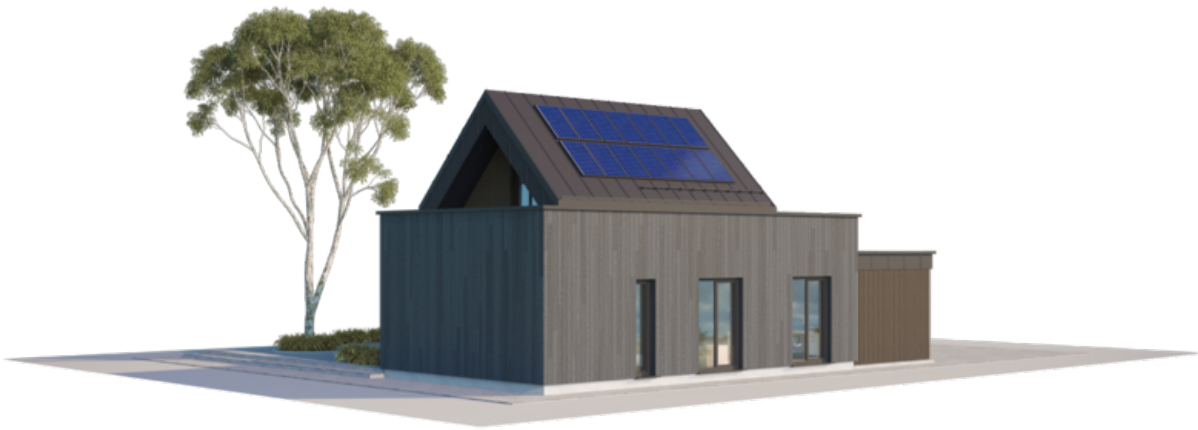
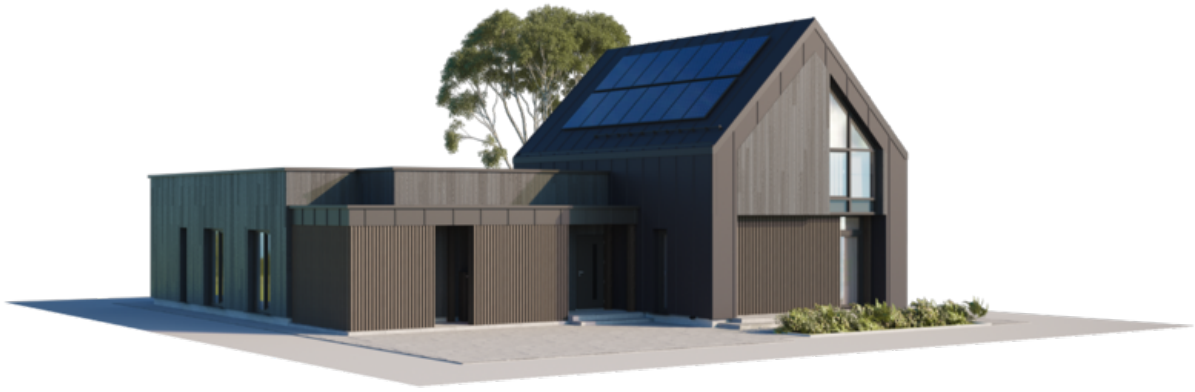
THE SWEET CUPCAKE LOFT "L" FORM II

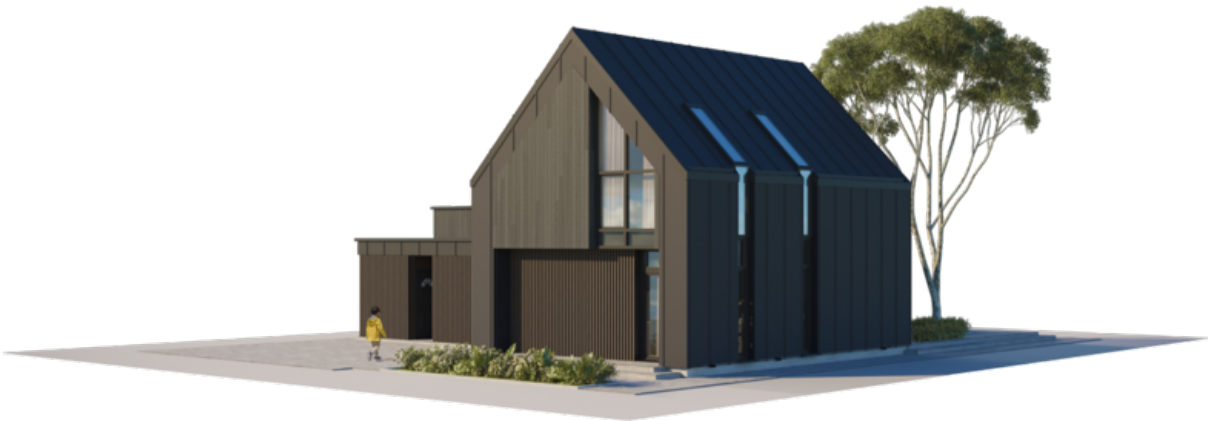


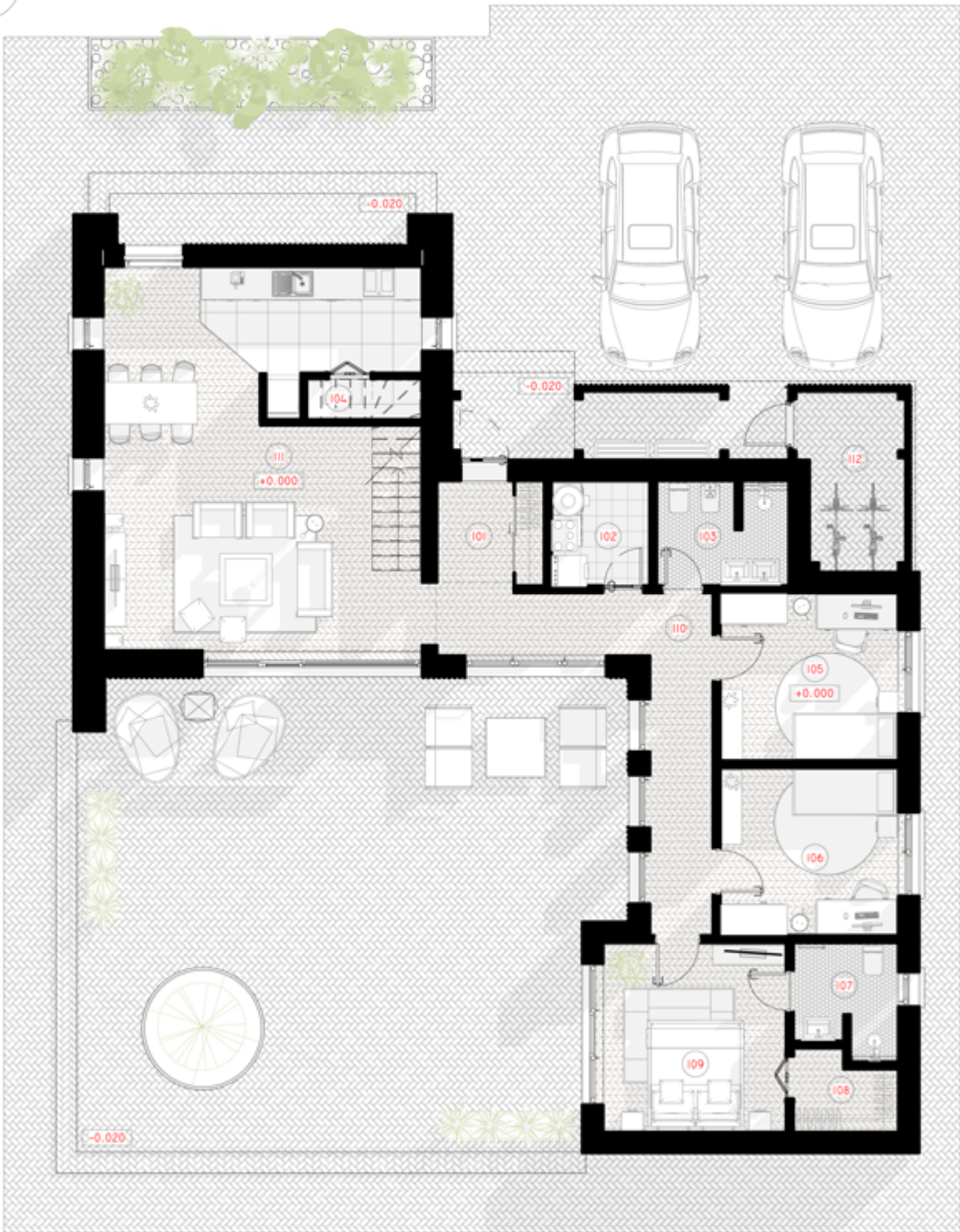
Living in a fast-paced environment often leaves little time to breathe fresh air and enjoy life here and now. For a brief pause after work or during vacations, NP5 has designed modular homes, THE SWEET CUPCAKE LOFT "L" SHAPE (WITH CARPORT), that captivate with their simplicity. They're crafted so that future residents would find everything they expect from a modern home: comfortable layout for adults and children, aesthetic interior and exterior finishes, a sturdy and durable house structure, and heating and ventilation solutions ensuring maximum comfort.

The 125.77 square meter modular homes can be adapted for both permanent living or vacation stays. How many occupants can it accommodate? It will comfortably accommodate a family with two children, a couple, or individuals living alone. Furthermore, there will always be space to host friends or family—next to the building, a terrace can be arranged where you can enjoy precious moments with loved ones or dedicate time to relaxation.

Our modular homes are particularly attractive in terms of pricing, catering even to those seeking a budget-friendly option. When purchasing a property, you can choose the desired level of furnishing and finishing. They are categorized as follows: 'Basic,' which includes lightweight thin-wall frame (LPPK) walls, stairs, flooring, and roof; 'Economic,' where additional PVC windows and exterior doors are installed, with the building insulated using multilayer panels; 'Standard,' which includes facade finishing. All project estimates are adjustable according to individual preferences and selected construction and finishing materials.





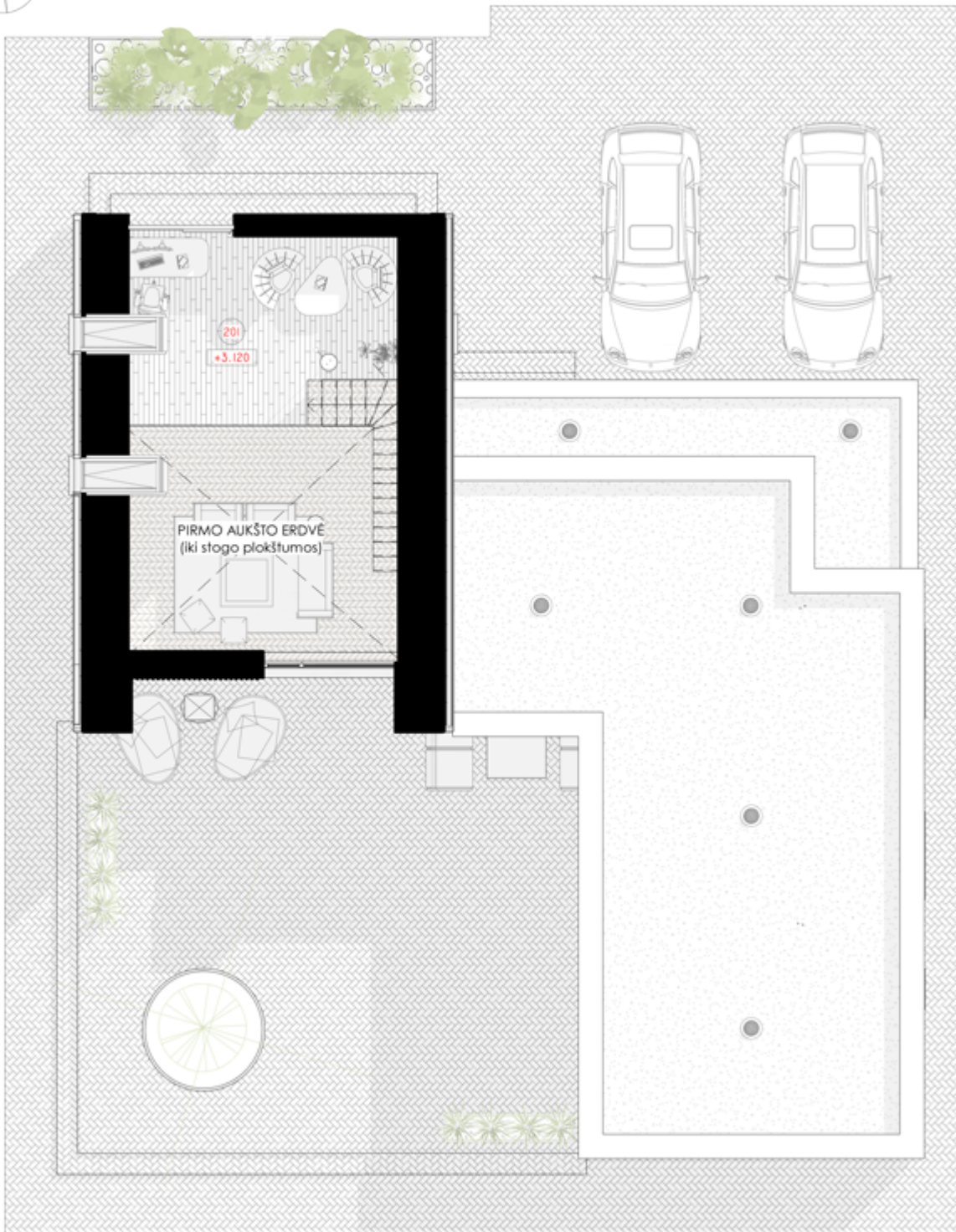


# 1ST FLOOR PLAN

---

101 TAMBUR	4.06 m <sup>2</sup>
102 BOILER ROOM	3.74 m <sup>2</sup>
103 WC	4.90 m <sup>2</sup>
104 PANTRY	0.97 m <sup>2</sup>
105 CHILD'S ROOM	10.91 m <sup>2</sup>
106 CHILD'S ROOM	10.91 m <sup>2</sup>
107 WC	4.03 m <sup>2</sup>
108 WARDROBE	2.78 m <sup>2</sup>
109 PARENTS BEDROOM	12.69 m <sup>2</sup>
110 HALL - CORRIDOR	13.11 m <sup>2</sup>
111 LIVING ROOM - KITCHEN	39.94 m <sup>2</sup>
112 ATTIC	6.67 m <sup>2</sup>
<b>TOTAL:</b>	<b>114.71 m<sup>2</sup></b>

---



# 2ND FLOOR PLAN

---

201 BEDROOM

17,13m<sup>2</sup>

---

**TOTAL:**

17,13m<sup>2</sup>

---