

**NPS**

# **PREFABRICATED WAREHOUSE "S"**

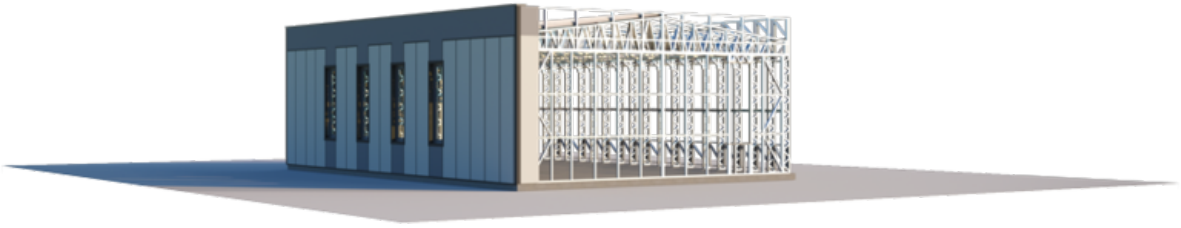
---

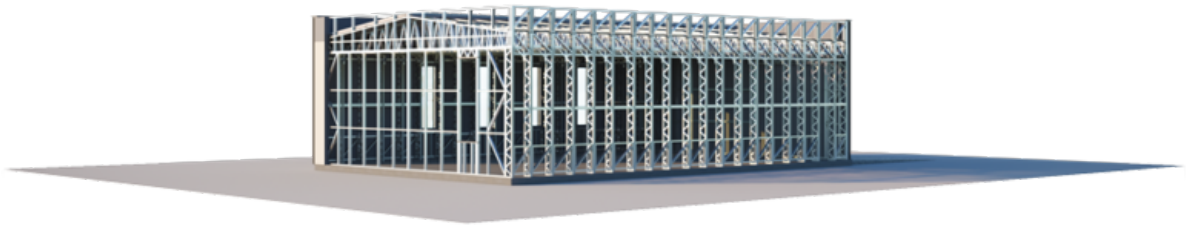
TOTAL AREA	224
NUMBER OF FLOORS	1
ROOF SLOPE	7
BUILDING AREA	187.57
LENGTH	18.8
WIDTH	12.34
HEIGHT	6.5

---

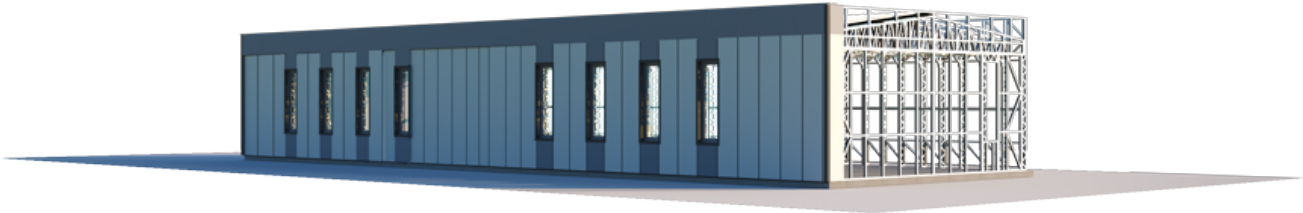
PRICE FROM

**€ 19.170**





# BASIC



---

WALLS - LPPK	-
--------------	---

---

OVERLAY - LPPK	-
----------------	---

---

ROOF - LPPK	-
-------------	---

---

PRICE  
€19.170

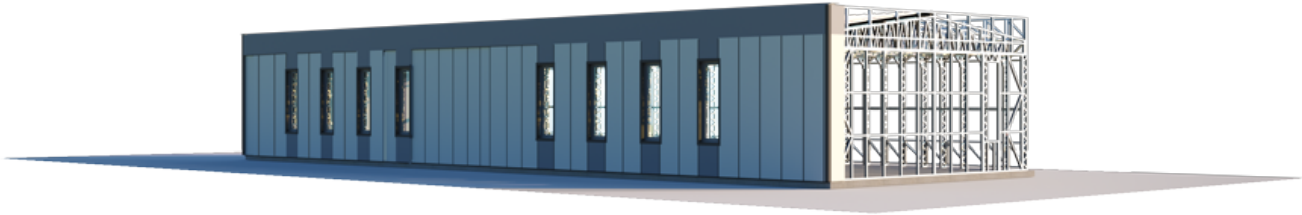
---

LPPK - Lightweight thin-walled frame construction.

Prices are for prefabricated structures ready for assembly at the factory.

Prices are adjusted on the day of the order according to the prices of materials valid at that time

# ECONOMIC



---

WALLS - LPPK -

---

ROOF - LPPK -

---

INSULATION - MULTILAYER PANELS (100 MM) -

---

WINDOWS, EXTERIOR DOORS - PVC -

---

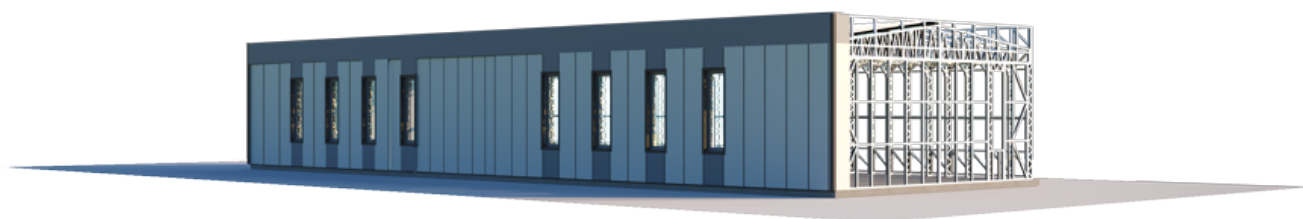
PRICE  
€55.535

---

LPPK - Lightweight thin-walled frame construction.

Prices are for prefabricated structures ready for assembly at the factory. Prices are adjusted on the day of the order according to the prices of materials valid at that time.

# STANDART



---

DRILLED FOUNDATION MATERIALS	-
LSGF, THERMAL INSULATION	-
WINDOWS, DOORS, GATES	-
INSULATION - MULTILAYER PANELS (100 MM)	-
TIN FOLDERS	-
PRICE	
€86.434	

---

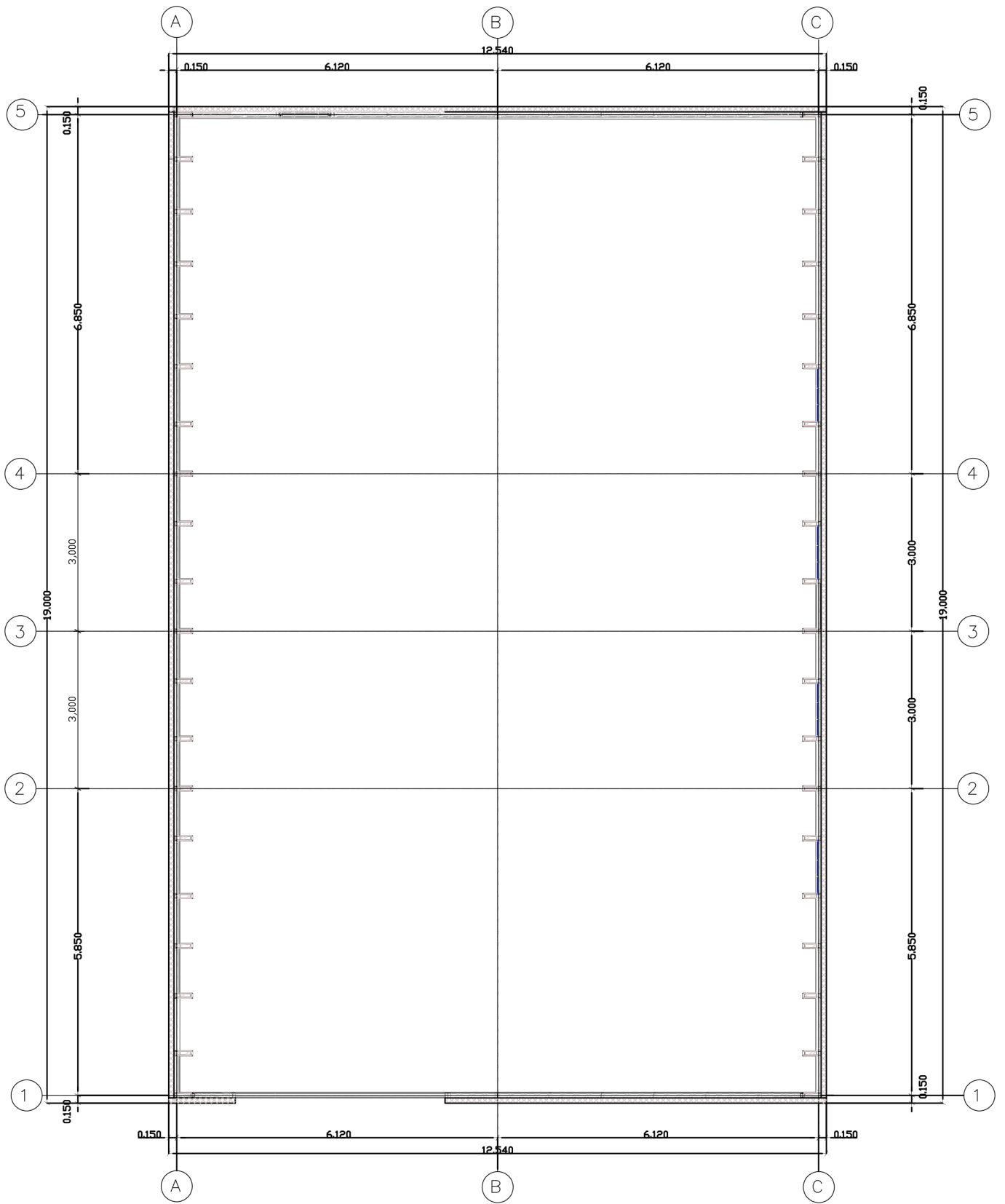
LPPK - Lightweight thin-walled frame construction.

**Work, mechanisms - €29.730.**

Prices are for prefabricated structures ready for assembly at the factory.

The price includes detailed assembly and construction drawings.

The prices are adjusted on the day of the order according to the prices of the materials valid in the market at that time.



# 1ST FLOOR PLAN

---

101 AREA	224 m <sup>2</sup>
----------	--------------------

---

<b>TOTAL:</b>	224 m <sup>2</sup>
---------------	--------------------

---